



51A Mount Hall Road Raymond Terrace NSW

3 1 1

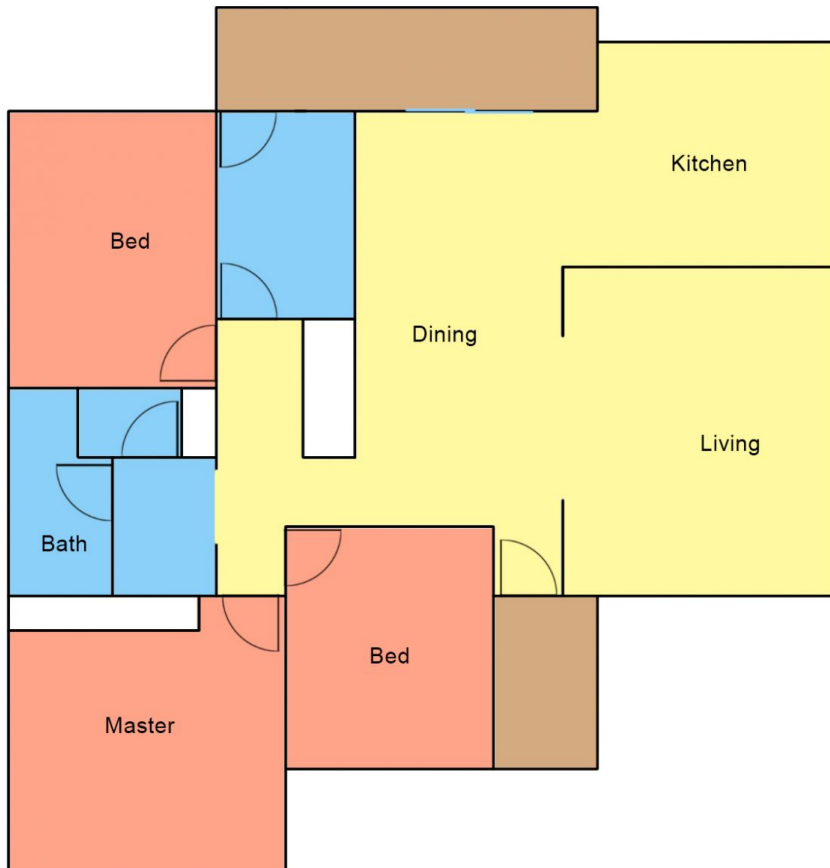
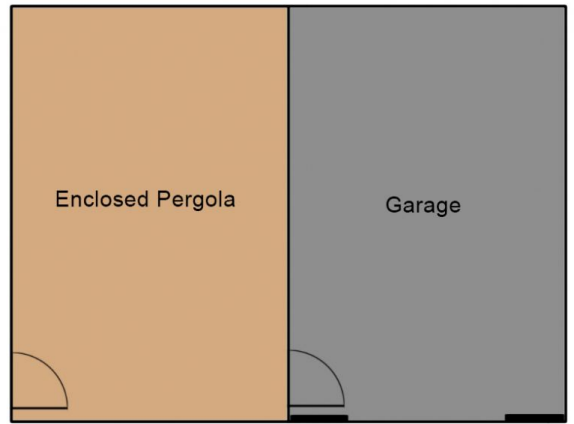
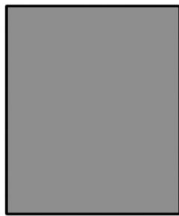
A bright & cheery home with a price reduction! With well maintained lawns & native gardens keeping this a very low maintenance home, it's perfect for 1st home buyers or those wanting to downsize. For the investor, estimated rental return is \$520 per week.

With new carpet throughout, the home features:
 Cosy, light filled loungeroom
 The dining room overlooks manicured lawns
 Original laminate kitchen in great condition
 3 way bathroom, bath & separate shower
 3 bedrooms with ceiling fans, main with mirrored robes
 Concrete driveway to freestanding colourbond single garage with auto door and attached enclosed pergola
 Large lawn locker in fully fenced rear back yard, child friendly & pet friendly

Land Size : 585 sqm
View : <https://www.dowlingterrace.com.au/sale/nsw/port-stephens/raymond-terrace/residential/house/7293725>



Kim Hammond
 0498 990 064



Disclaimer

This floor and site plan including fixtures, furniture, measurements and dimension are approximate and for illustrative purposes only. This floor plan gives not guarantee, warranty or representation of accuracy and layout. All enquiries must be directed to the agent or party representing this floor plan