

DOWLING

PROPERTY



2 Pennington Street Raymond Terrace NSW

3  2  1 

READY SET GO!

This offering makes a great starter for the buyer looking to purchase their first home or investment. Located in well established Roslyn Park it features:

- * 3 bedrooms, ensuite and mirrored robe to main
- * The single garage has been converted to 4th bedroom but easily converted back
- * L Shaped lounge and dining with glass sliding doors
- * Spacious family room with RC/AC opening onto large outdoor entertainment area
- * Modern kitchen with servery
- * Separate toilet
- * The converted garage does offer drive thru access

EXTRAS INCLUDE: CEILING FANS & OVERSIZED

Price : \$ 568,000
Land Size : 531 sqm
View : <https://www.dowlingterrace.com.au/sale/nsw/port-stephens/raymond-terrace/residential/house/7293947>

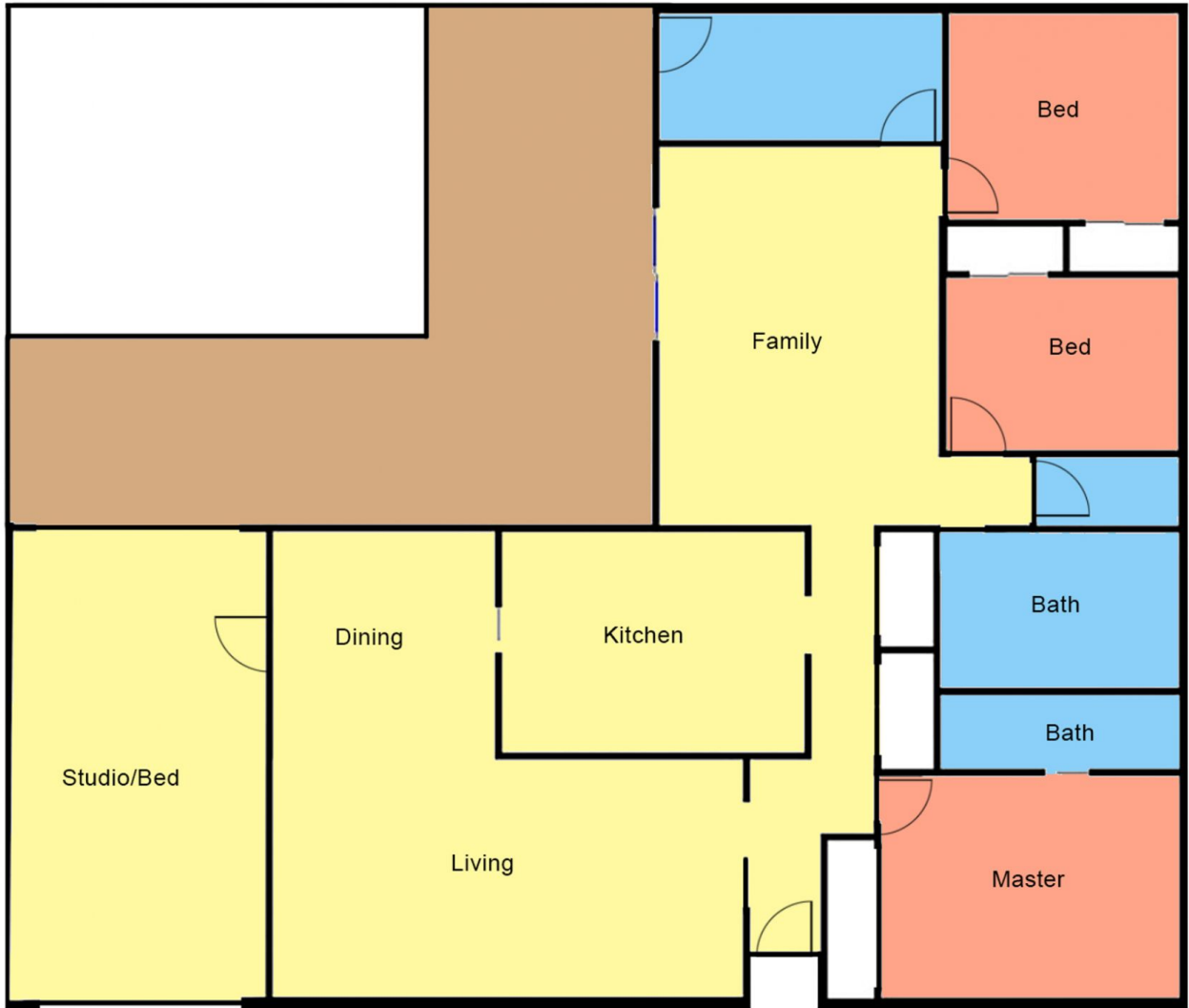


Craig Higgins
02 4987 2226



Kim Hammond
0498 990 064

<https://www.dowlingterrace.com.au>



Disclaimer

This floor and site plan including fixtures, furniture, measurements and dimension are approximate and for illustrative purposes only. This floor plan gives not guarantee, warranty or representation of accuracy and layout. All enquiries must be directed to the agent or party representing this floor plan