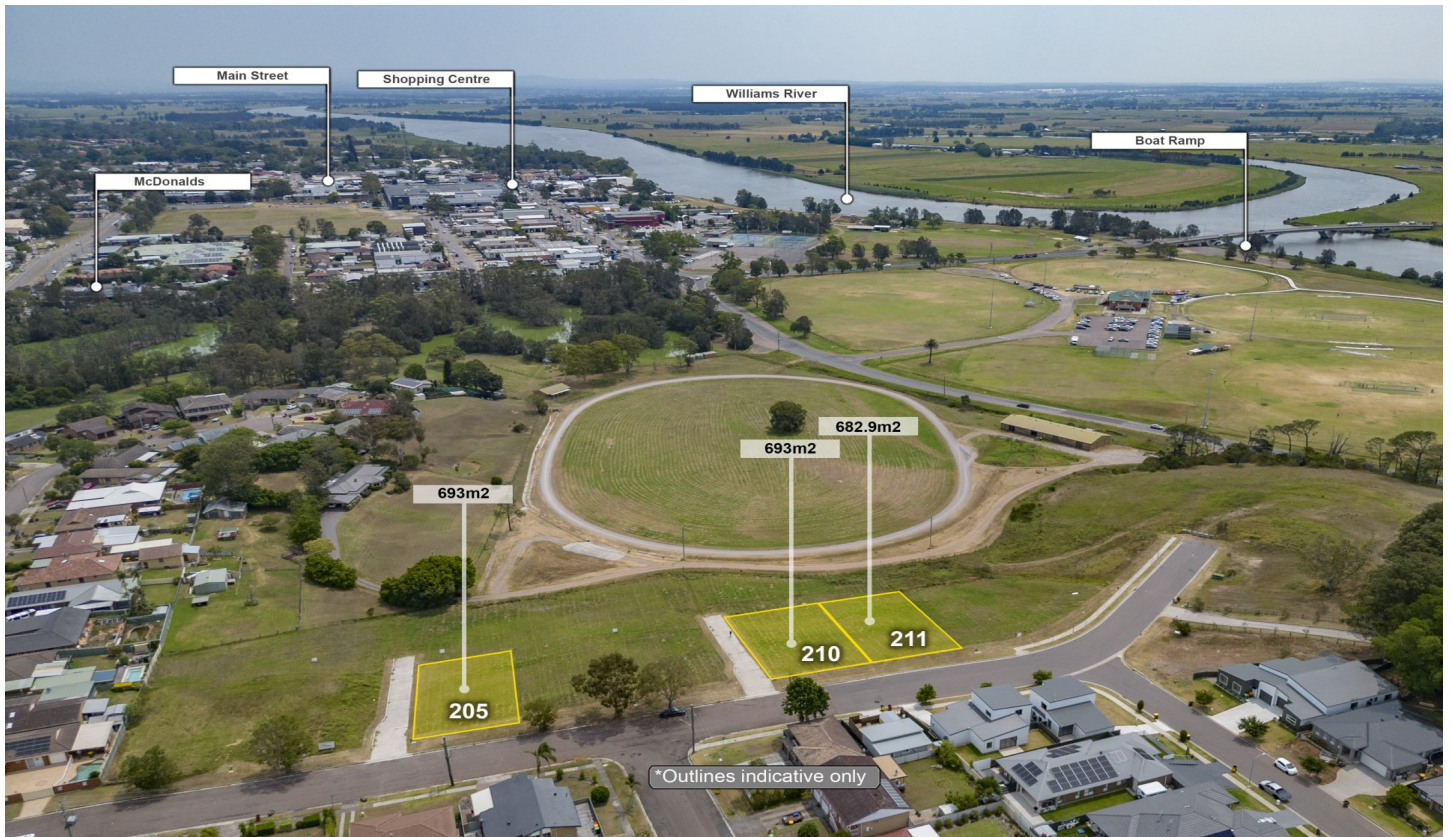


DOWLING

PROPERTY



211/23 Binns Street Raymond Terrace NSW

23 BINNS STREET, RAYMOND TERRACE

- * Prime location, well established area
- * 682.9 m2
- * Only 2km drive or 1km walk to centre of town
- * Offering potential views of the Hunter and Williams Rivers and surrounding farmland
- * Some sloping from road down, ideal for split level home

CLICK ON THE VIDEO TOUR

SALES PACK AVAILABLE

Price : \$270,000

View : <https://www.dowlingterrace.com.au/sale/nsw/port-stephens/raymond-terrace/residential/land/7294645>



Kim Hammond
0498 990 064



Liam Higgins
0423 832 732

This information has been provided to us by third parties

<https://www.dowlingterrace.com.au>