



21 Carramar Close Brandy Hill NSW

5 3 5

Located at the end of a cul-de-sac on 2 1/2 acres in prestigious Brandy Hill Estate this massive home, (5 living areas) just needs a bit of work to bring it back to its former glory.

Land Size : 10000 sqm

View : <https://www.dowlingterrace.com.au/sale/nsw/port-stephens/brandy-hill/residential/house/7300657>

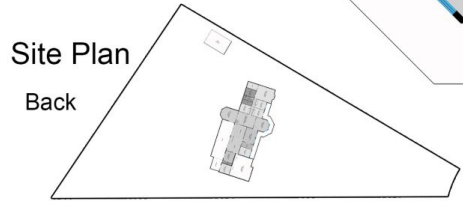
FEATURES:

- * 5 bedrooms, 4 with built-ins
- * Huge main bedroom (size of a normal lounge room) with ensuite and walk-in robe
- * Tiled entry foyer
- * Formal lounge of the entry foyer
- * Large TV room off the formal living
- * Separate games room with brick feature walls
- * Off the games room is a spacious rumpus room with cavity brick
- * Colossal kitchen with a huge amount of bench and



Kim Hammond
0498 990 064

Measurements are approximate
and are to be used only as a guide



DOWLING
PROPERTY

21 Carramar Close, Brandy Hill