



183A Benjamin Lee Drive Raymond Terrace NSW

3 2 1

TORRENS TITLE TOWNHOUSE - No strata fees!

Finishes of light colours on the walls and tiled flooring brighten the living spaces in this modern townhouse. A large L shaped private yard provides a blank canvass and secure area for the kids to play.

Upstairs:

3 bedrooms all with built-in robes and ceiling fans
Main bedroom has ensuite
Main bathroom has bath with separate shower
Separate toilet

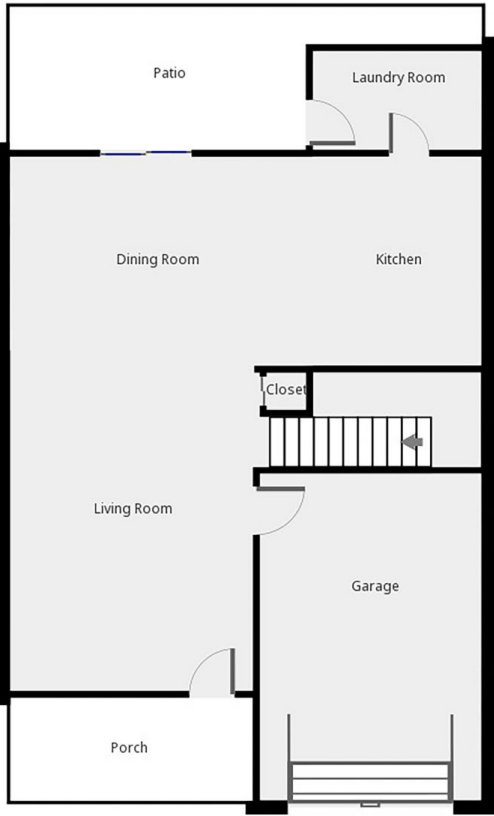
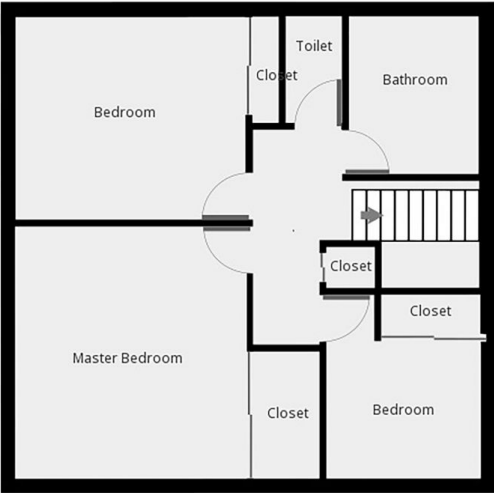
Downstairs:

A continuous living - dining - kitchen space with modern tiled flooring
Modern, efficient kitchen with pantry & dishwasher
Spacious laundry and 3rd toilet

View : <https://www.dowlingterrace.com.au/sale/nsw/port-stephens/raymond-terrace/residential/townhouse/7317877>



Gregg Bates
0418 416 343



THIS FLOORPLAN IS PROVIDED WITHOUT WARRANTY OF ANY KIND. SENSOPIA DISCLAIMS ANY WARRANTY INCLUDING, WITHOUT LIMITATION, SATISFACTORY QUALITY OR ACCURACY OF DIMENSIONS.