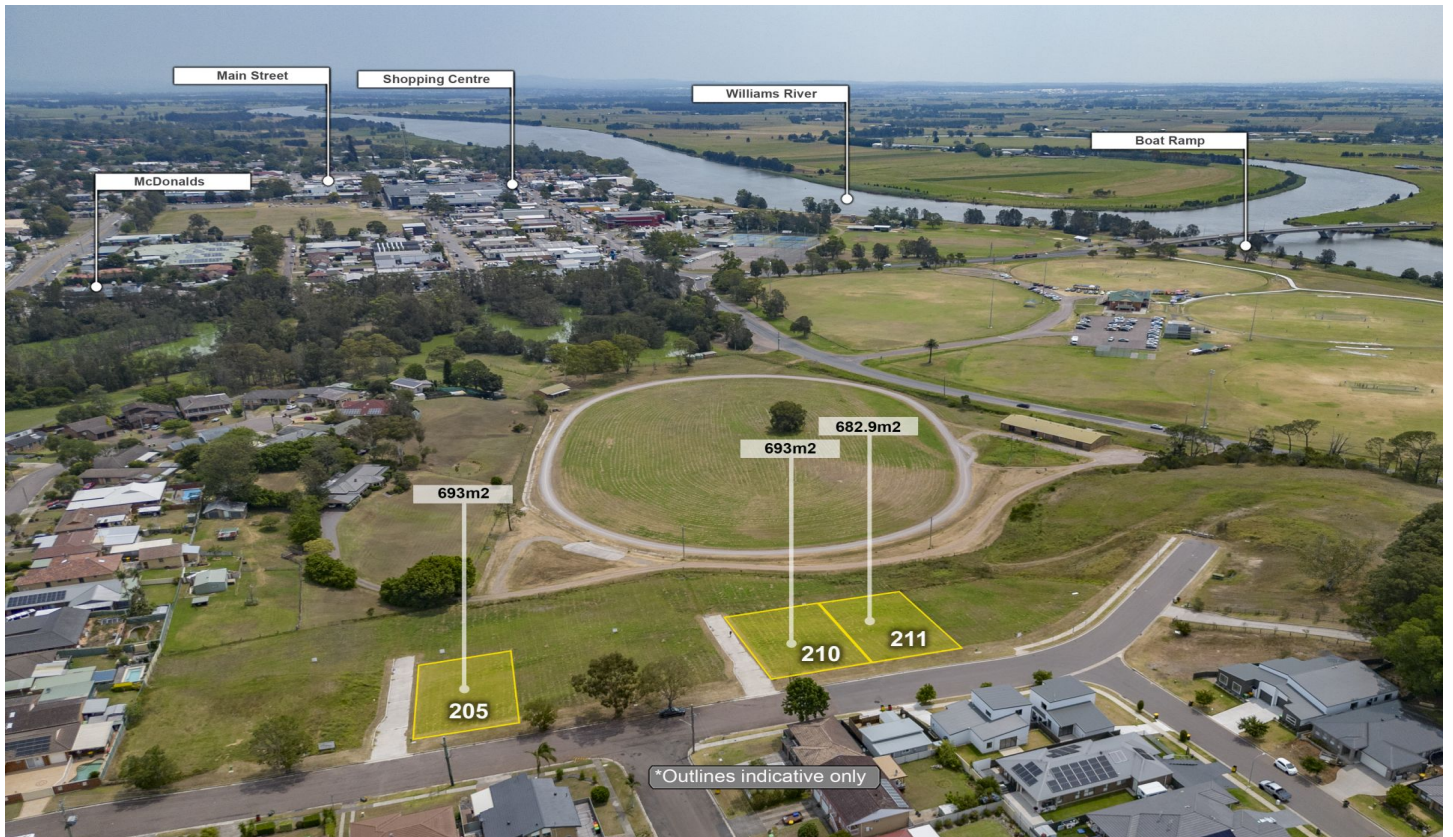


# DOWLING

## PROPERTY



### 210/21 Binns Street Raymond Terrace NSW

- \* Prime location, well established area
- \* 693m2
- \* Only 2km drive or 1km walk to centre of town
- \* Offering potential views of the Hunter and Williams Rivers and surrounding farmland

**Price** : \$288,000  
**Land Size** : 693 sqm  
**View** : <https://www.dowlingterrace.com.au/sale/ns-w/port-stephens/raymond-terrace/residential/land/7343181>



**Kim Hammond**  
0498 990 064



**Liam Higgins**  
0423 832 732

This information has been provided to us by third parties and we do not accept responsibility for its accuracy. You should make your own enquiries and check the information so as to determine whether or not this information is in fact accurate. You must make your own assessment and obtain