

DOWLING

PROPERTY



27 Martens Avenue RAYMOND TERRACE NSW

4  3  3 

There's plenty of room for all the family in this home which boasts 4 genuine living rooms and so, so much more.

Great for entertaining, convenient location and quality throughout.

Features:

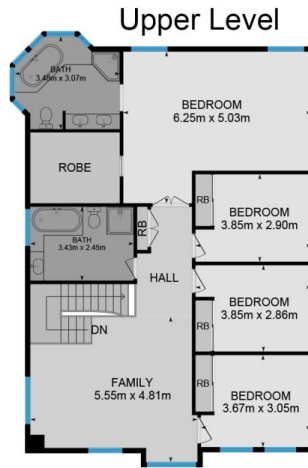
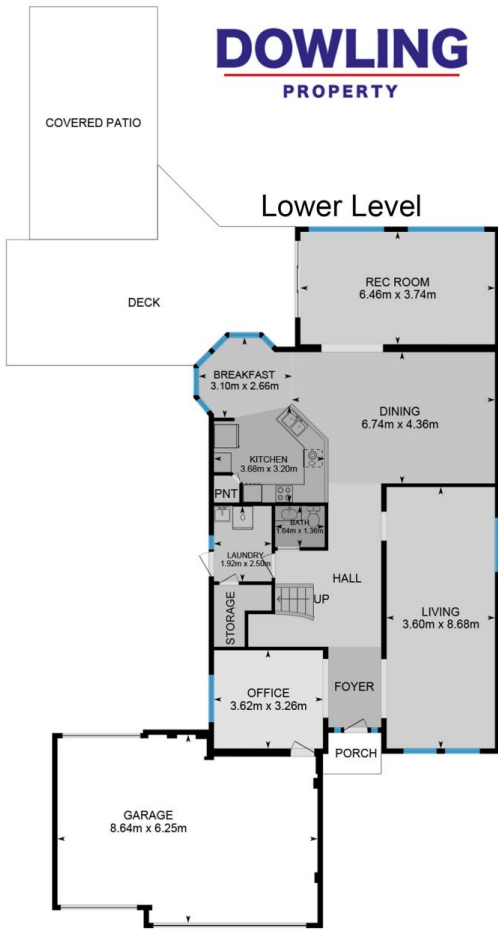
- 4 bedrooms all with built in robes
- HUGE main (size of a lounge room) with walk in robe & ensuite that also offers large bath
- Spacious formal living and dining area (approx. 8m x 4m)
- Tiles to all traffic areas and wide entry
- Study or media room
- Ultra-modern kitchen with ceaserstone benches and plenty of cupboard and bench space
- Casual dining
- Family room off the kitchen

View : <https://www.dowlingterrace.com.au/sale/nsw/port-stephens/raymond-terrace/residential/house/7348427>

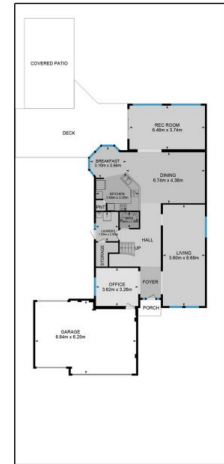


Craig Higgins
02 4987 2226

<https://www.dowlingterrace.com.au>



Site Plan
Back



Front

27 Martens Ave, Raymond Terrace