



27 Martens Avenue Raymond Terrace NSW

4 2 3

This distinctive modern two storey home stands out! With a welcoming wide foyer opening onto multiple living spaces, the home is maximised with light courtesy of the floor-to-ceiling windows & high ceilings.

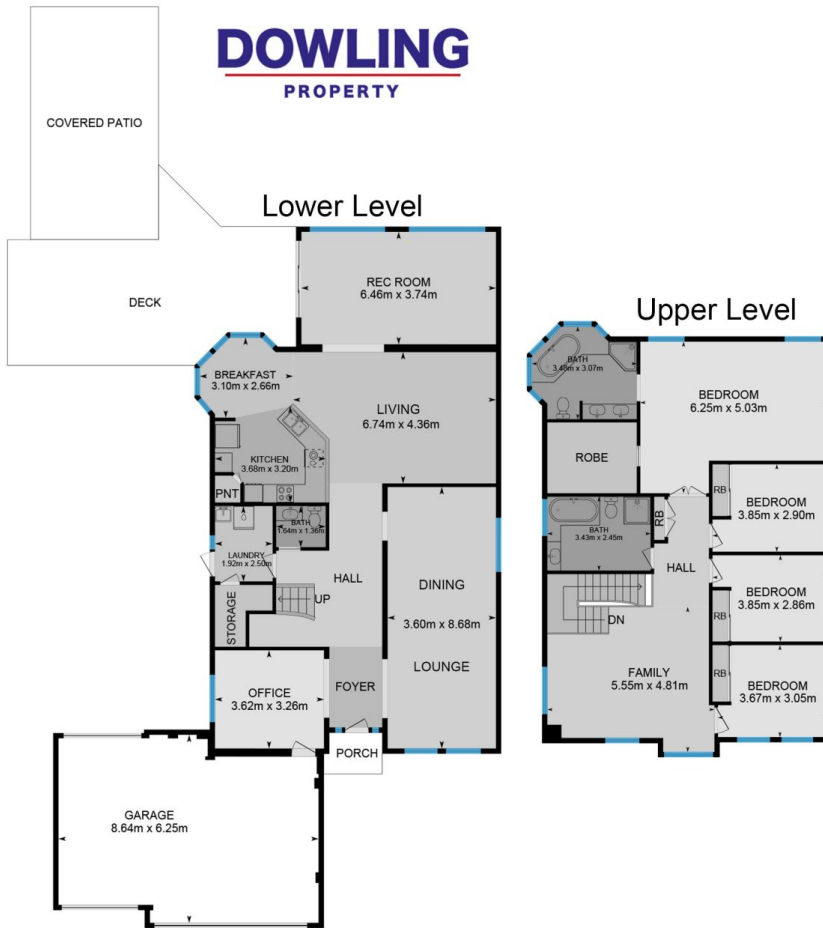
Ground Floor:

Tiled entry
Formal lounge & dining room
Office, laundry & powder room
Living room
Stunning kitchen with Caesarstone bench tops, new dishwasher, gas cook-top & wall oven
Light filled casual dining room with bow windows
Rumpus room opening onto a large timber deck & undercover entertainment area with enough room for a pool out back. The perfect backdrop for entertaining.
Triple garage with internal access, one auto door and

Price : \$ 810,000
Land Size : 682 sqm
View : <https://www.dowlingterrace.com.au/sale/now/port-stephens/raymond-terrace/residential/house/7349851>



Kim Hammond
0498 990 064



Site Plan
Back



Front

27 Martens Ave, Raymond Terrace