



107 Mount Hall Road Raymond Terrace NSW

4 2 2

Ideally located in Lakeside, this home is within walking distance to Irrawang High School, Lakeside Shopping Village and childcare facilities. Very popular for prospective tenants and a very affordable first home.

Price : \$ 630,000
Land Size : 666 sqm
View : <https://www.dowlingterrace.com.au/sale/now/port-stephens/raymond-terrace/residential/house/7422345>

The home features:

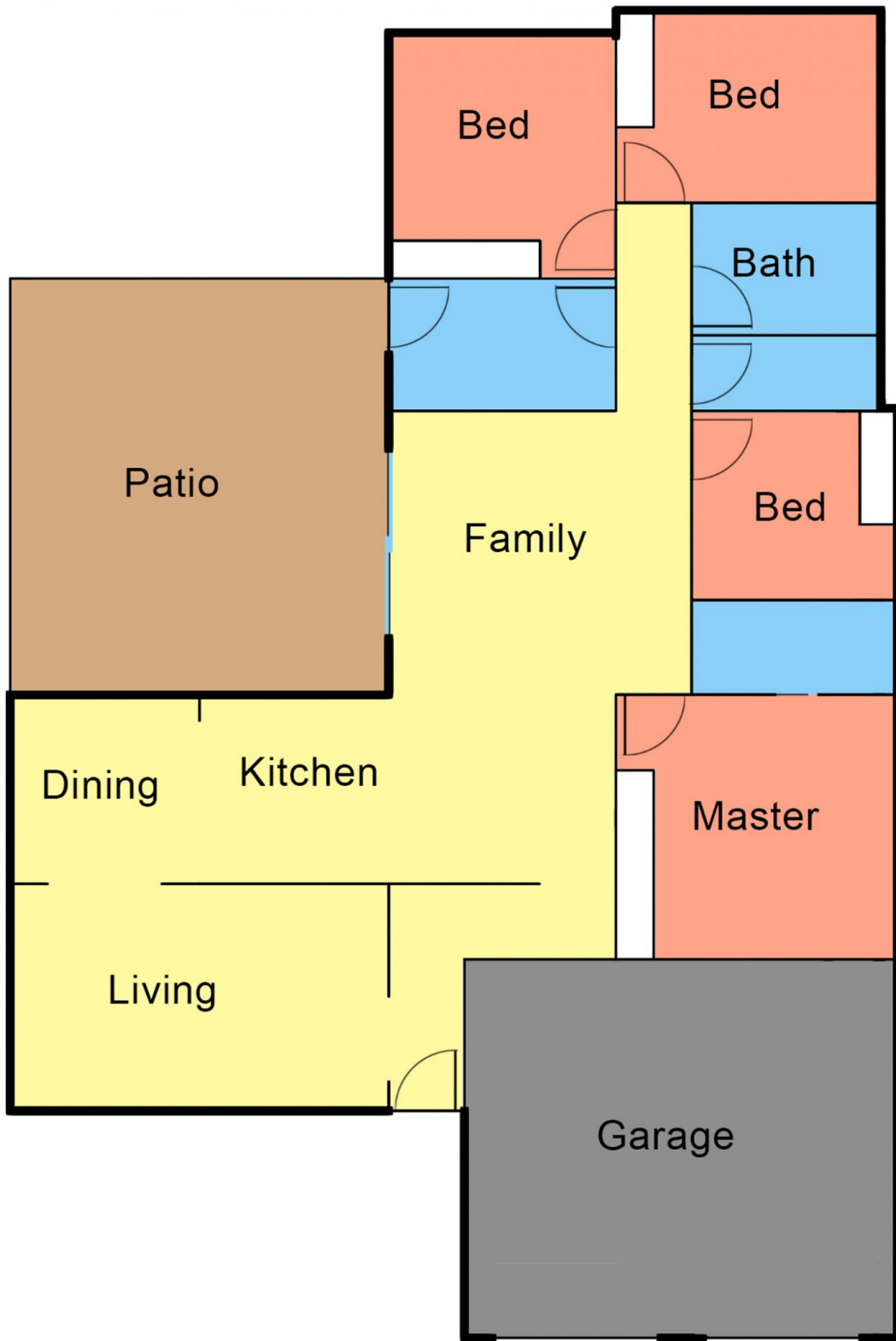
- * Tiled entry
- * 4 bedrooms all with mirrored robes
- * Ensuite and RC/AC to main bedroom
- * L Shaped lounge and dining
- * Large galley style kitchen with plenty of cupboard and bench space
- * Family room off the kitchen that opens out to a generous sized aluminium pergola area
- * Double garage with internal access
- * Offers side vehicle access to the backyard



Craig Higgins
02 4987 2226



Kim Hammond
0498 990 064



Disclaimer

This floor and site plan including fixtures, furniture, measurements and dimension are approximate and for illustrative purposes only. This floor plan gives not guarantee, warranty or representation of accuracy and layout. All enquiries must be directed to the agent or party representing this floor plan