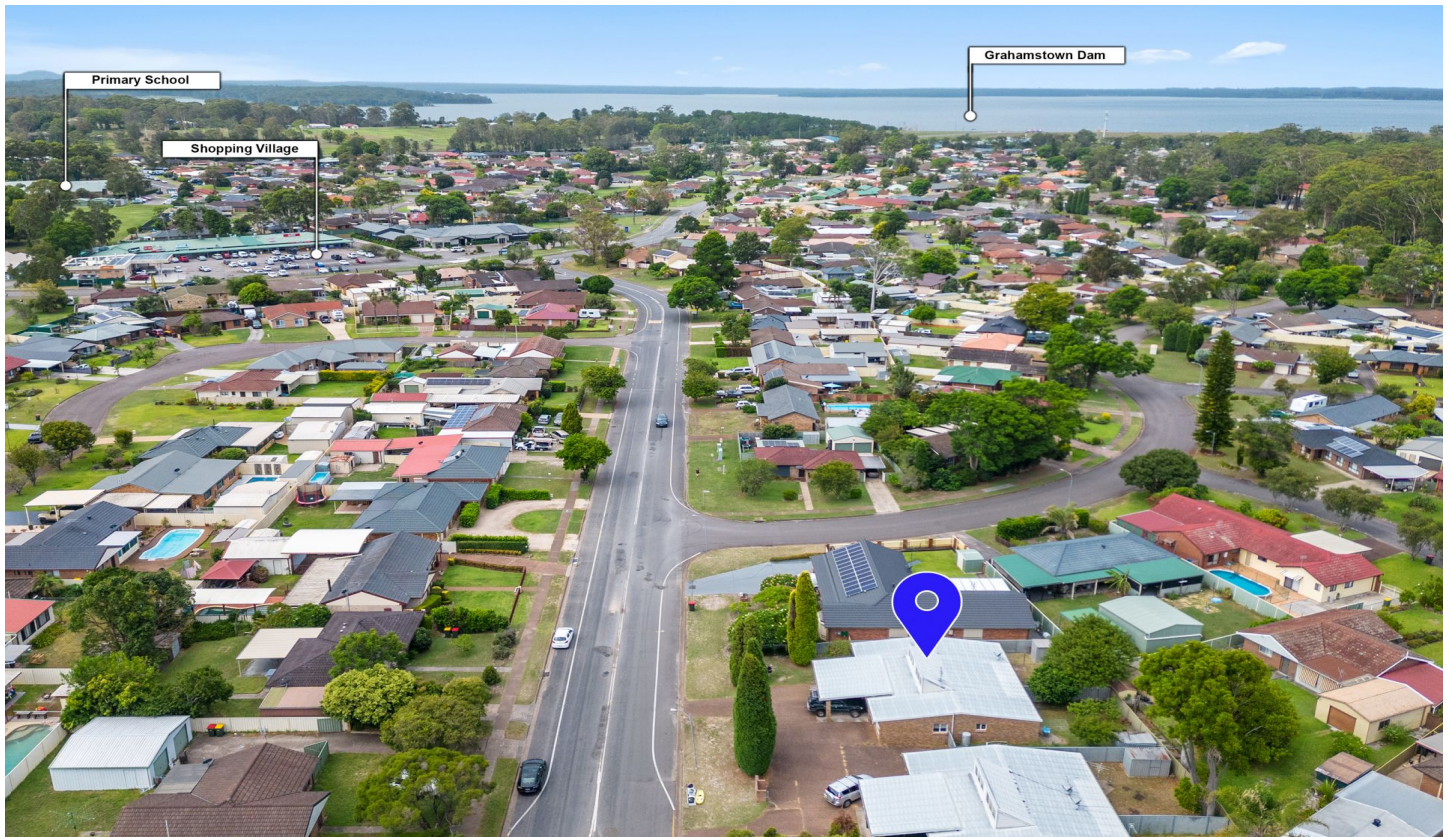


# DOWLING

## PROPERTY



**1/135 Mount Hall Road Raymond Terrace NSW**

**2  1  1 **

Ideally located in the heart of the Lakeside estate and within walking distance to a host of facilities including High, primary and pre schools, neighborhood shopping complex, Tavern and Day Care.

Also offers bus stop at your door.

**View :** <https://www.dowlingterrace.com.au/sale/nsw/port-stephens/raymond-terrace/residential/unit/7449873>

### Features:

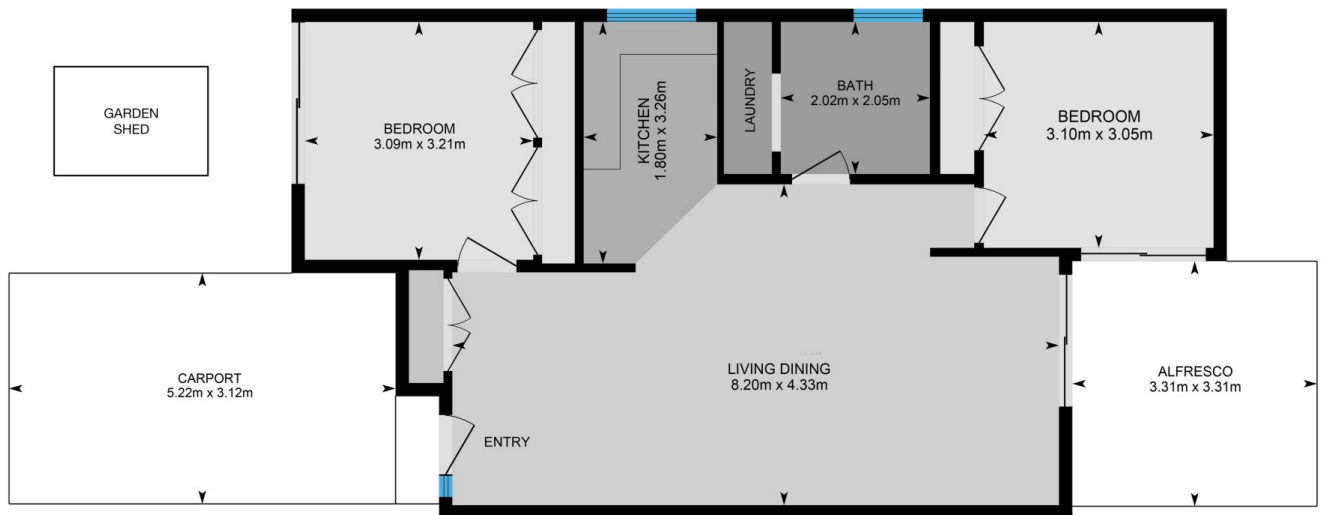
- 2 Bedrooms with built ins
- Open planned living and dining
- Separate Kitchen
- High Ceilings
- Cavity brick feature wall
- All in one bathroom
- Undercover back patio
- Generous sized yard
- RC/AC



**Craig Higgins**  
**02 4987 2226**

<https://www.dowlingterrace.com.au>

Measurements are approximate  
and are to be used only as a guide



Site Plan

Front



Back

**DOWLING**  
PROPERTY

1/135 Mount Hall Road, Raymond Terrace