



28 Hillside Close RAYMOND TERRACE NSW

3  1 

Private Inspections available.
Masks must be worn and only 1 buyer to enter premises at any time..

Land Size : 534 sqm
View : <https://www.dowlingterrace.com.au/sale/nsw/port-stephens/raymond-terrace/residential/house/7482833>

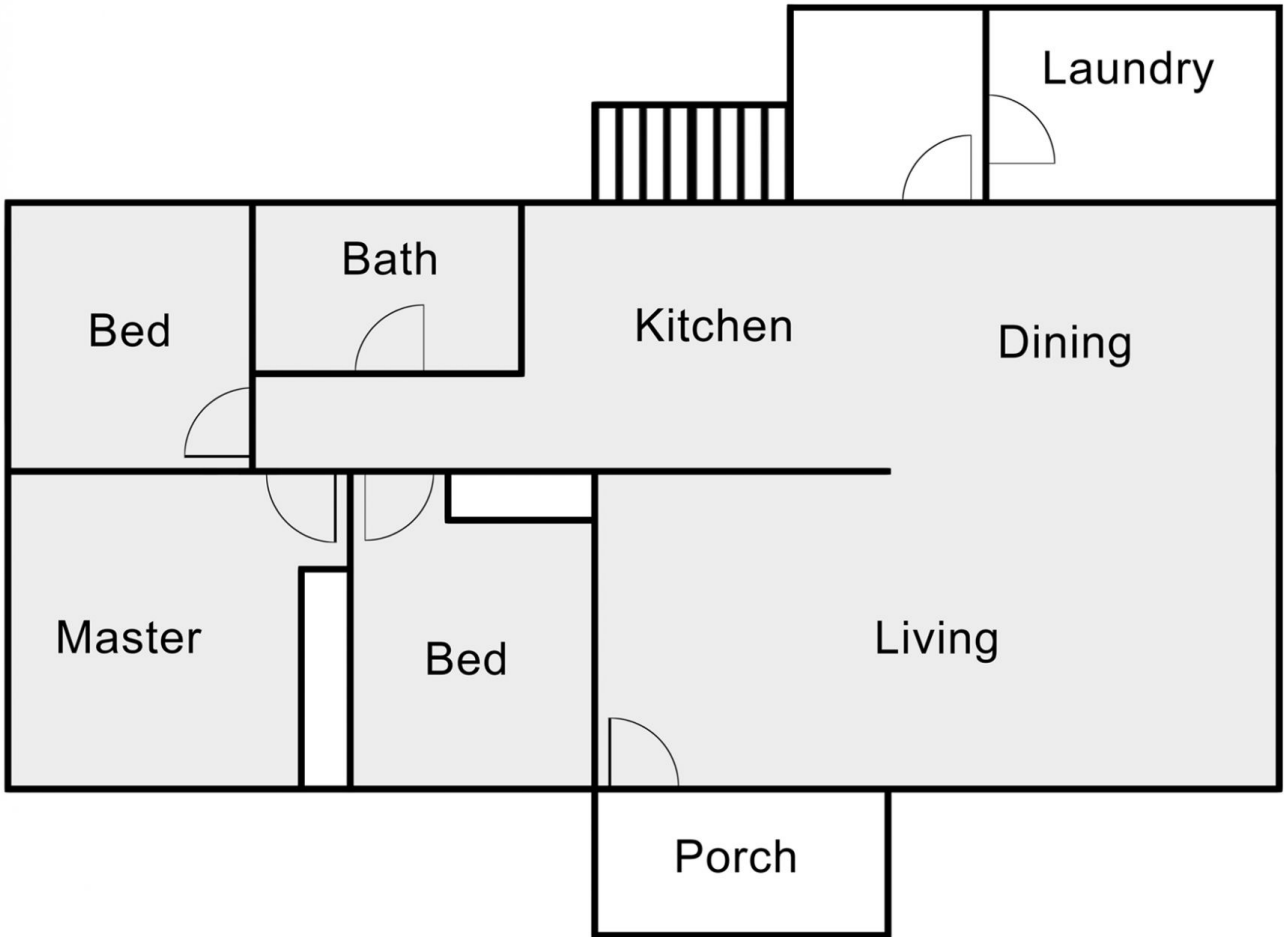
Ideally located at the end of a cul-de-sac, backing onto reserve and a 1.8km drive to the Marketplace or 900 metre walk.

Set on a 534m2 lot it features:

- * 3 bedrooms, 2 with built-in robes
- * Open planned L shaped lounge/dining
- * Separate kitchen
- * All in one renovated bathroom
- * Paved back area
- * External laundry
- * Elevated home that offers underhouse storage



Craig Higgins
02 4987 2226



Disclaimer

This floor and site plan including fixtures, furniture, measurements and dimension are approximate and for illustrative purposes only. This floor plan gives not guarantee, warranty or representation of accuracy and layout. All enquiries must be directed to the agent or party representing this floor plan