



6 Kendall Place Raymond Terrace NSW

3 1 2

Would suit the investor or first home buyer.

Ideally located in the "Lakeside Estate" in a quiet cul-de-sac & within walking distance to Grahamstown Primary School, the local neighbourhood shopping centre, childcare & daycare facilities & the local tavern.

Price : \$ 639,000
Land Size : 618 sqm
View : <https://www.dowlingterrace.com.au/sale/nsw/port-stephens/raymond-terrace/residential/house/7612765>

The home features:

- 3 bedrooms all with mirrored robes
- Generous sized main with ensuite access to bathroom
- Spacious formal lounge to front of house
- Galley style kitchen with plenty of bench & cupboard space
- Family / Dining off the kitchen
- Enclosed Queenslander room offering a genuine 3rd living area

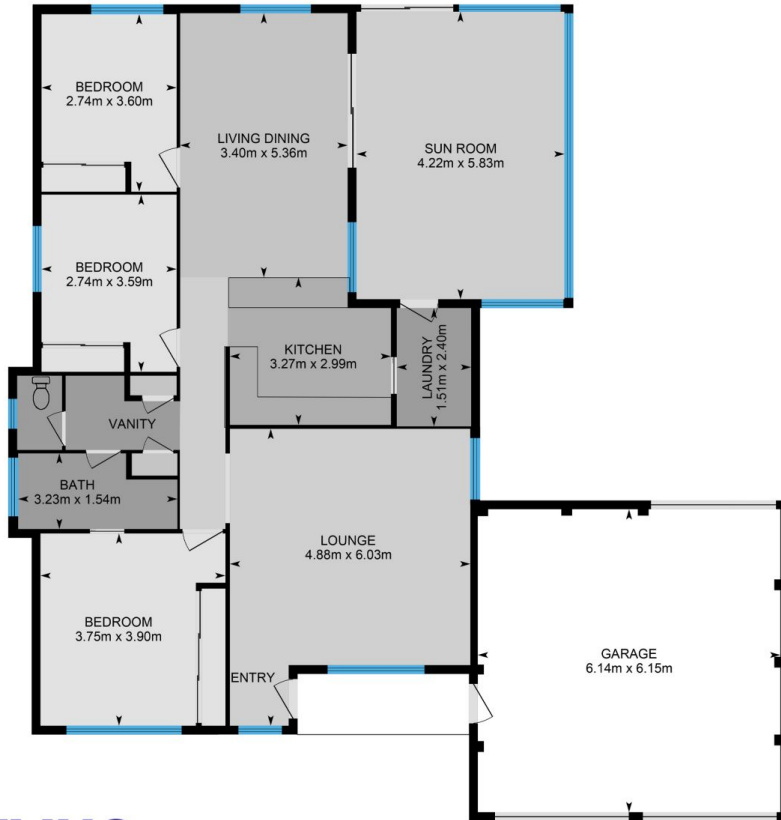


Kim Hammond
0498 990 064



Craig Higgins
02 4987 2226

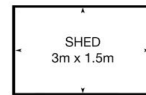
Measurements are approximate
and are to be used only as a guide



Site Plan
Back



Front



DOWLING
PROPERTY

6 Kendall Place, Raymond Terrace