



46 Cederwood Crescent RAYMOND TERRACE NSW

4 2 2

Set on a generous sized level lot of 741m² this conveniently located home would suit both the owner occupier or investor.

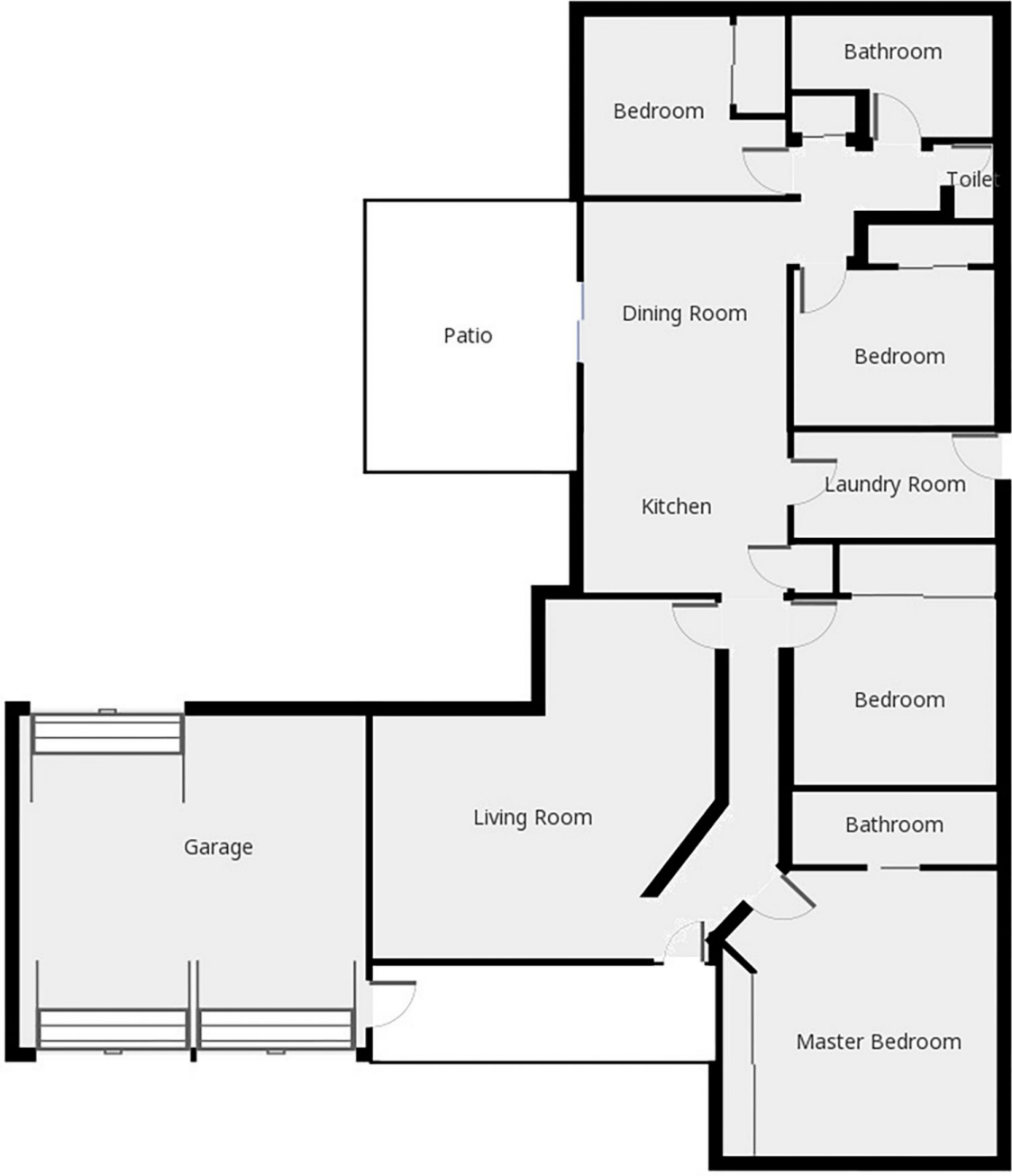
Land Size : 741 sqm
View : <https://www.dowlingterrace.com.au/sale/nsw/port-stephens/raymond-terrace/residential/house/7626021>

Recently re-carpeted and with a fresh coat of paint the home with within walking distance to schools, childcare and the Lakeside neighborhood shopping center it features: -

- * 4 bedrooms all with built-ins robes
- * Ensuite to main
- * Oversized formal lounge/dining
- * Practical kitchen with loads of bench and cupboard space
- * Tiled family meals area
- * Aluminium pergola
- * 3 way bathroom
- * Double garage with drive thru access and undercover to main dwelling



Craig Higgins
02 4987 2226



THIS FLOORPLAN IS PROVIDED WITHOUT WARRANTY OF ANY KIND. SENSOPIA DISCLAIMS ANY WARRANTY INCLUDING, WITHOUT LIMITATION, SATISFACTORY QUALITY OR ACCURACY OF DIMENSIONS.