



10 Lachlan Street RAYMOND TERRACE NSW

4 2 2

Conveniently located in Lakeside Village Estate and within walking distance to schools, childcare, shops and recreational facilities, this home features:

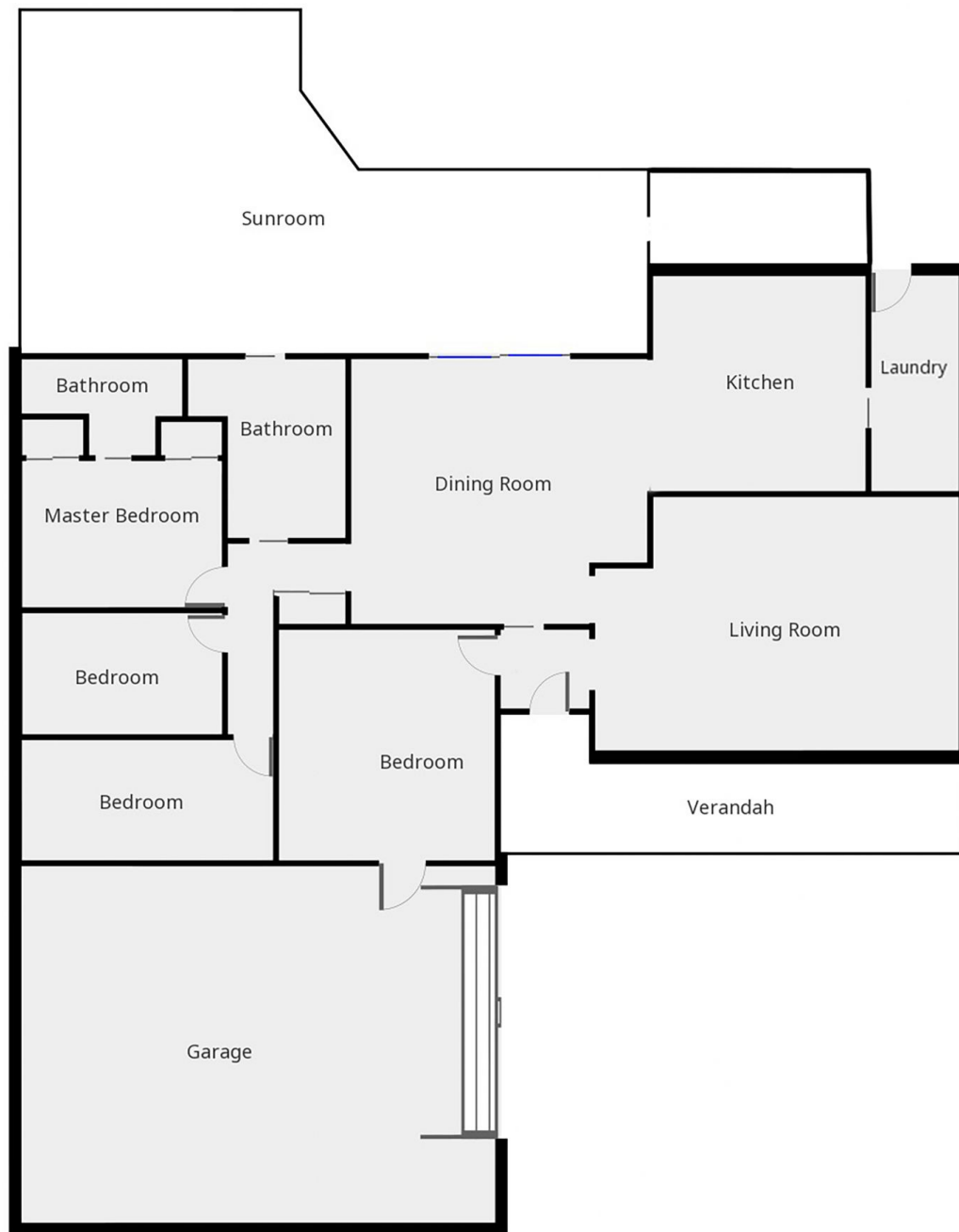
- * 4 bedrooms all with built-ins
- * Ensuite to main
- * Spacious formal lounge
- * Combined family meals area
- * Timber kitchen
- * All in one main bathroom complete with 2 seater spa
- * Large tiled screened entertaining area at the rear with built in bar
- * Built-in BBQ area
- * Double garaging with workshop

EXTRAS INCLUDE: RC/AC, AUTO GARAGE DOOR, COMBUSTION FIRE, GARDEN SHED & CEILING FANS,

Land Size : 675 sqm
View : <https://www.dowlingterrace.com.au/sale/ns-w/port-stephens/raymond-terrace/residential/house/7641191>



Craig Higgins
02 4987 2226



THIS FLOORPLAN IS PROVIDED WITHOUT WARRANTY OF ANY KIND. SENSOPIA DISCLAIMS ANY WARRANTY INCLUDING, WITHOUT LIMITATION, SATISFACTORY QUALITY OR ACCURACY OF DIMENSIONS.