



### 3 Lynista Close RAYMOND TERRACE NSW

3 1 2

Located in Roslyn Park in a quiet little cul-de-sac, this renovated home sits on a large 765sqm lot and is only a 4 minute drive to the CBD. & would suit both owner occupier or investor and a great opportunity for the first home buyer.

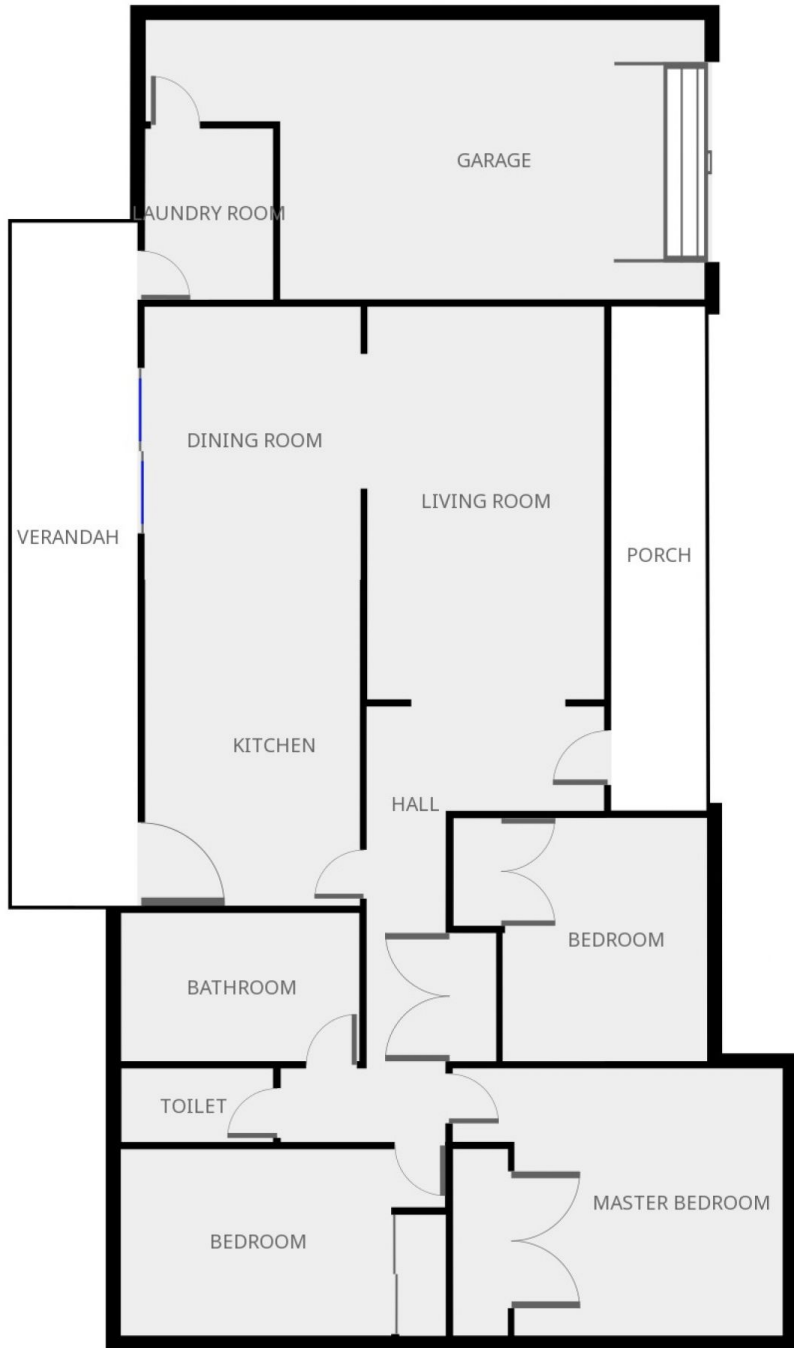
**View** : <https://www.dowlingterrace.com.au/sale/nsw/port-stephens/raymond-terrace/residential/house/7664899>

#### Features:

- 3 bedrooms, all with built-ins
- Formal lounge
- Separate dining off the kitchen
- As new kitchen with glass rangehood and wall oven
- Fully renovated bathroom
- Separate toilet
- Polished floors to all living areas
- Huge yard, room for a pool and so much more
- New hot water system



**Craig Higgins**  
02 4987 2226



THIS FLOORPLAN IS PROVIDED WITHOUT WARRANTY OF ANY KIND. SENSOPIA DISCLAIMS ANY WARRANTY INCLUDING, WITHOUT LIMITATION, SATISFACTORY QUALITY OR ACCURACY OF DIMENSIONS.