



## 1 Porphyry Street Seaham NSW

3  2  3 

PLEASE SUBMIT YOUR APPLICATION PENDING INSPECTION VIA 2 APPLY

View : <https://www.dowlingterrace.com.au/lease/nsw/port-stephens/seaham/residential/house/7704227>

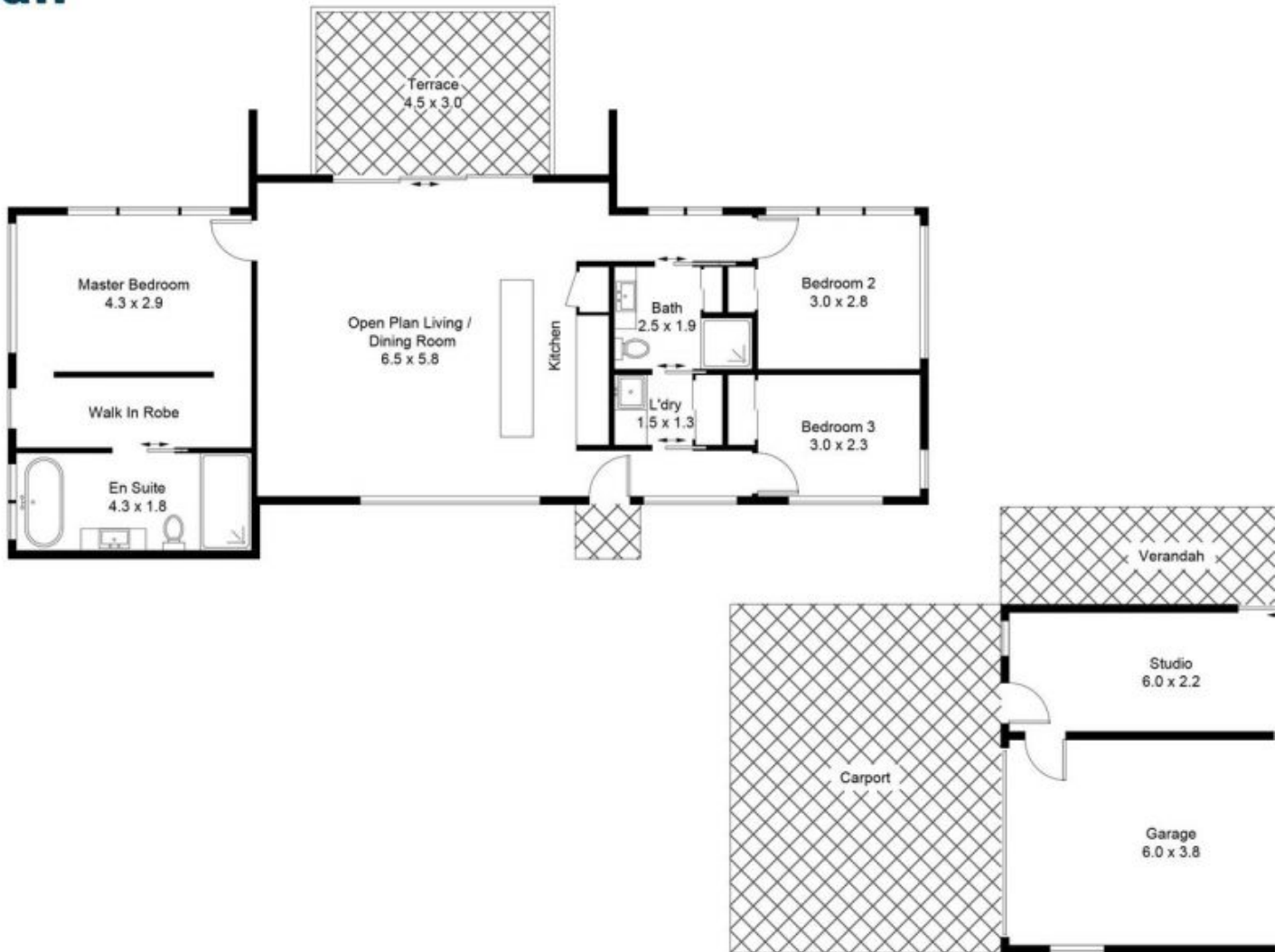
This quality built home sits on approximately 1195sqm with elevated views over the surrounding farmland that adjoins the Williams River. Ideally located in the sought after suburb of Seaham, with city conveniences only 20 minutes away. Premium property features include:

- Colorbond and hardwood cladding for a contemporary aesthetic
- Open plan living area and kitchen separates the master bedroom and addition 2 bedrooms
- Sliding glass doors open out to the timber deck for indoor/outdoor living; perfect for a cuppa of a morning or a glass of wine on dusk!
- Combustion fireplace and reverse cycle air conditioning to



**Rental Department**  
02 4987 2226

# lan



(Not Shown In Actual Location / Orientation)

ments are a guide only and may not be absolutely accurate.