



## 3 Courtaulds Road RAYMOND TERRACE NSW

3 1 1

Both for the investor or 1st home buyer ideally located within a 1.4km walk to the centre of the CBD and also Hunter River High School while Primary and Pre-School is only a 500m walk.

**Land Size** : 516 sqm  
**View** : <https://www.dowlingterrace.com.au/sale/nsw/port-stephens/raymond-terrace/residential/house/7709284>

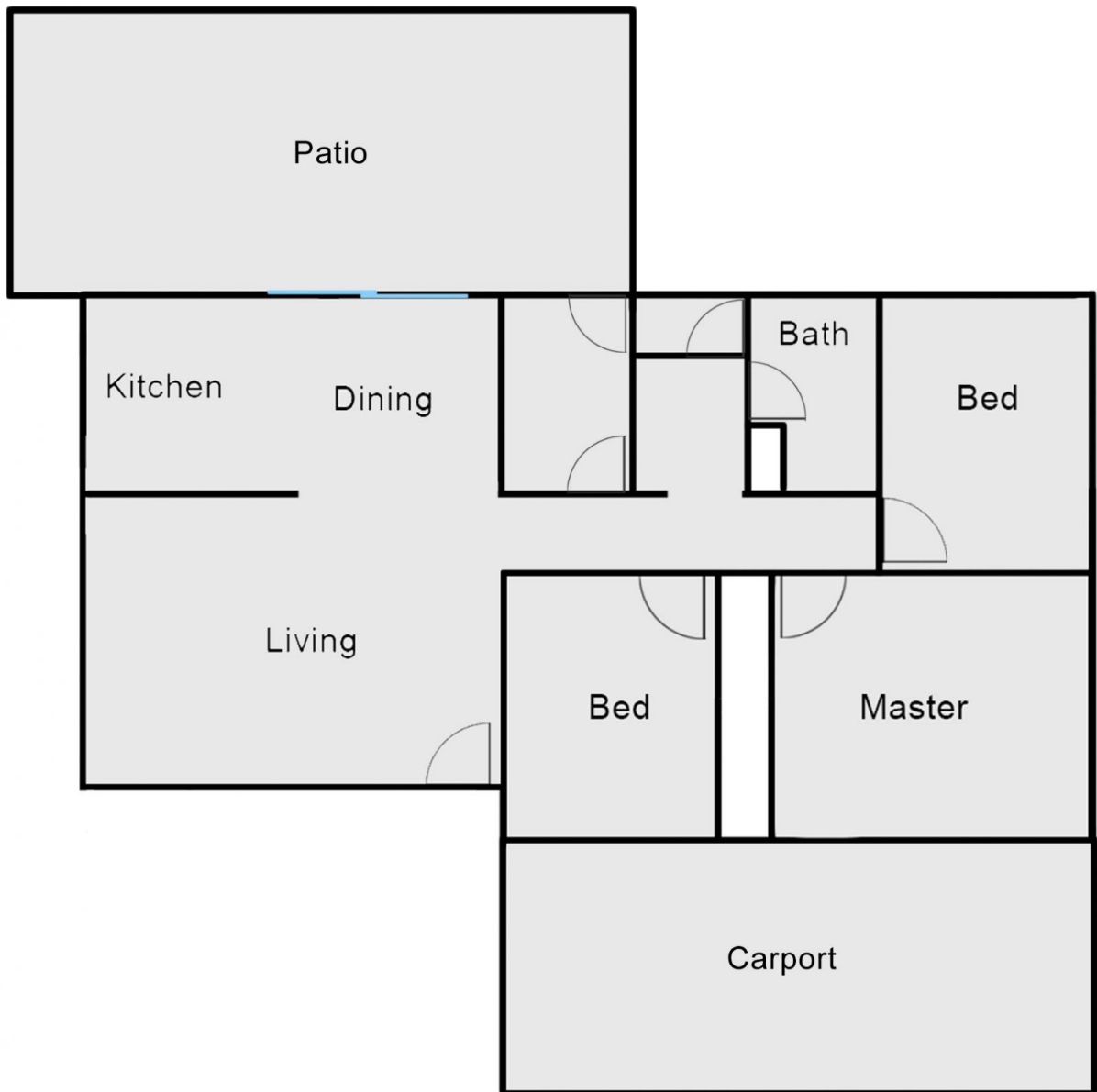
### Features:

- \* 3 bedrooms with built-in to main
- \* Formal lounge
- \* Delightful kitchen and adjoining dining
- \* 3 way bathroom
- \* Enclosed back pergola area
- \* Generous sized yard
- \* Single carport
- \* RC/AC and ceiling fans

Expected rental \$400 - \$430 per week



**Craig Higgins**  
 02 4987 2226



**Disclaimer**

This floor and site plan including fixtures, furniture, measurements and dimension are approximate and for illustrative purposes only. This floor plan gives not guarantee, warranty or representation of accuracy and layout. All enquiries must be directed to the agent or party representing this floor plan