



### 3 Lynista Close RAYMOND TERRACE NSW

3 1 1

Set on a large 765sqm lot in sought after Roslyn Park Estate and in a quiet cul-de-sac of only 5 dwellings. This ideal 1st home or investment features;

- \* 3 bedrooms, all with built-in wardrobes
- \* Formal lounge room
- \* Combined kitchen and dining
- \* Modern galley style kitchen with loads of cupboard and bench space
- \* Polished timber floors to all living areas
- \* Oversized, 1 1/2 car, garage
- \* Huge back yard with 34m rear boundary

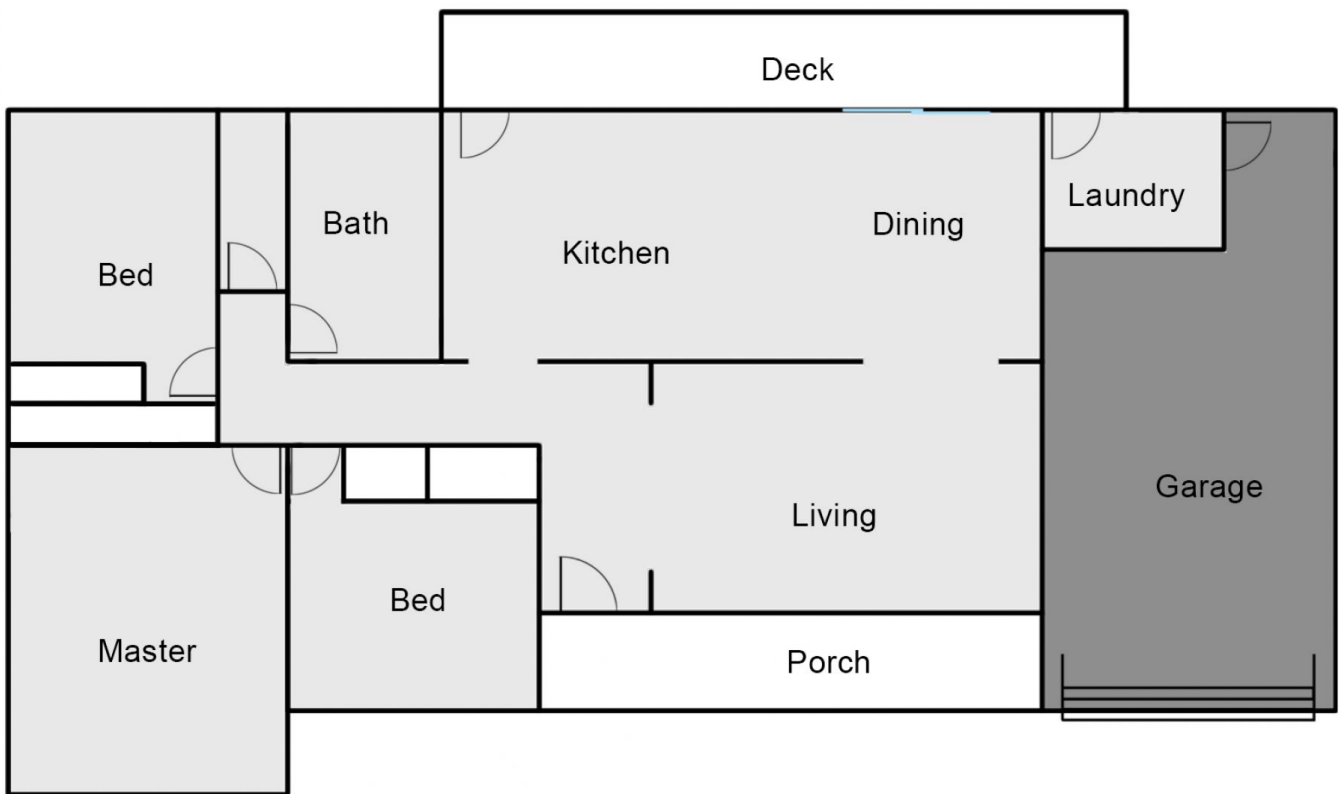
EXTRAS INCLUDE: RC/AC, CEILING FANS AND DISHWASHER

Please note there is currently a lease on this property that

**Land Size** : 765 sqm  
**View** : <https://www.dowlingterrace.com.au/sale/nsw/port-stephens/raymond-terrace/residential/house/7818365>



**Craig Higgins**  
 02 4987 2226



**Disclaimer**

This floor and site plan including fixtures, furniture, measurements and dimension are approximate and for illustrative purposes only. This floor plan gives not guarantee, warranty or representation of accuracy and layout. All enquiries must be directed to the agent or party representing this floor plan