



## 7 Charles Street RAYMOND TERRACE NSW

3 1 1

You'll find this well presented home on a 626 sqm corner block, 1.1kms from Raymond Terrace CBD.

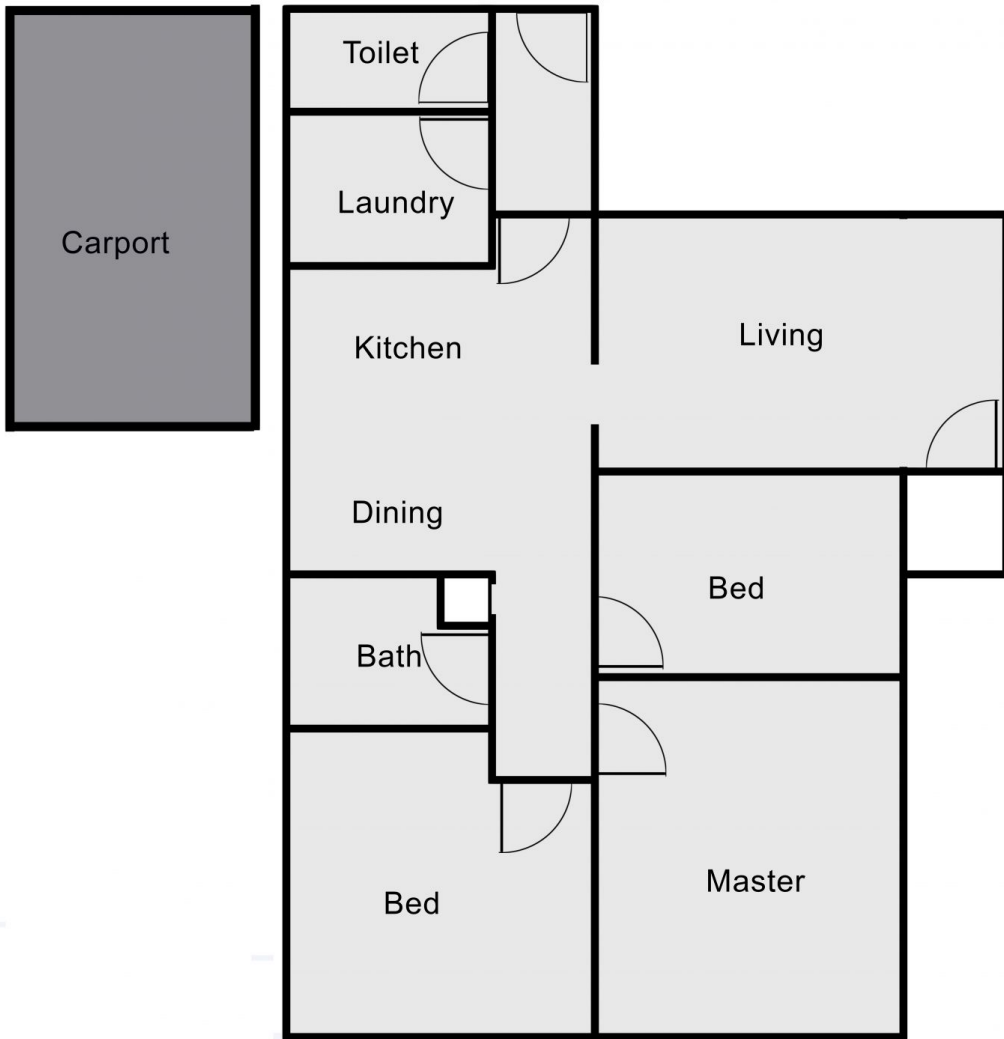
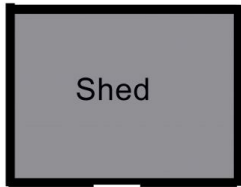
### Features:

- Lounge with RC/AC & ceiling fan
- Combined kitchen & dining
- Renovated bathroom, shower over bath
- 3 bedrooms, two with ceiling fans
- 2nd toilet & laundry
- Single carport & lawn locker
- Dual occupancy potential, subject to council approval

**Land Size** : 626 sqm  
**View** : <https://www.dowlingterrace.com.au/sale/nsw/port-stephens/raymond-terrace/residential/house/7873256>



**Kim Hammond**  
0498 990 064



**Disclaimer**

This floor and site plan including fixtures, furniture, measurements and dimension are approximate and for illustrative purposes only. This floor plan gives not guarantee, warranty or representation of accuracy and layout. All enquiries must be directed to the agent or party representing this floor plan