



5/3-5 Mosman Place RAYMOND TERRACE NSW

3  1  1 

A spacious townhouse with two living spaces in a quality complex within walking distance to shops, school, childcare and parks. A fully maintained inground swimming pool only 20 meters from your front door.

View : <https://www.dowlingterrace.com.au/sale/nsw/port-stephens/raymond-terrace/residential/townhouse/7945388>

UPSTAIRS:

- * 3 bedrooms all with mirrored robes & modern double blinds
- * 3 way main bathroom

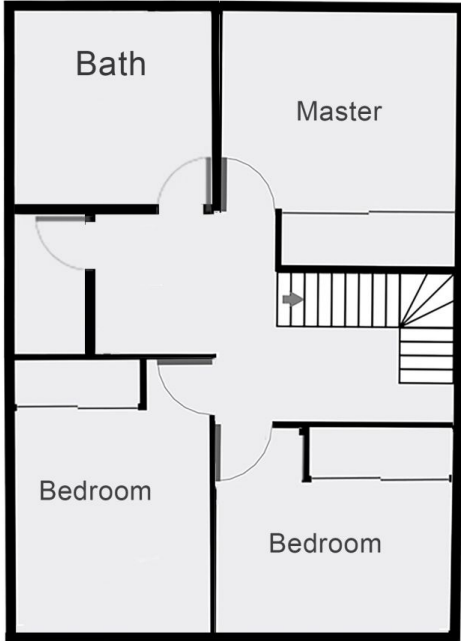
DOWNSTAIRS:

- * Formal lounge upon entry
- * Modern kitchen with plenty of cupboard and bench space and double door pantry
- * Combined family and dining room looking out on to a compact green courtyard with carefully placed trees providing shade

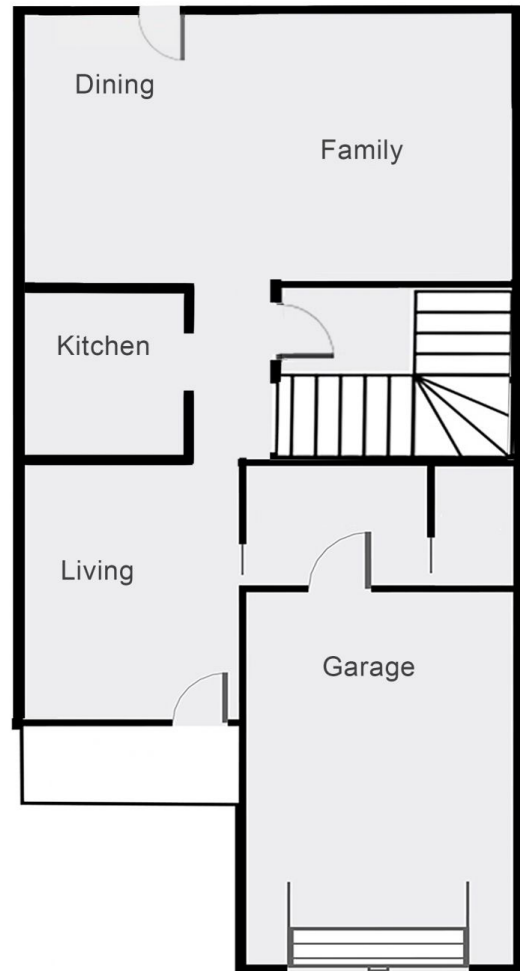


Craig Higgins
02 4987 2226

1st Floor



Ground Floor



THIS FLOORPLAN IS PROVIDED WITHOUT WARRANTY OF ANY KIND. SENSOPIA DISCLAIMS ANY WARRANTY INCLUDING, WITHOUT LIMITATION, SATISFACTORY QUALITY OR ACCURACY OF DIMENSIONS.