

### 9 Sailors Way Raymond Terrace NSW

4  2  2 

Motivated vendors moving interstate! Come and inspect for yourself this newly built steel framed home, just 4.6 kms north of Raymond Terrace CBD.

Step into the wide, inviting entryway of this modern marvel, where every detail has been carefully crafted for your comfort and convenience. Tiled throughout, the open-plan design seamlessly connects the living spaces, making entertaining a breeze.

? The heart of the home is the spacious galley kitchen, complete with striking marble splashback, walk-in pantry, and top-of-the-line appliances. From here, the dining area, living room, and study nook flow effortlessly to the outdoor oasis, where an inground swimming pool and meticulously landscaped lawns and gardens await.

? Indulge in relaxation in the main bathroom, boasting floor-to-ceiling tiles, a luxurious free-standing bath, and a separate shower alcove-no glass to clean!

**Price** : \$ 870,000

**Land Size** : 693 sqm

**View** : <https://www.dowlingterrace.com.au/sale/nsw/port-stephens/raymond-terrace/residential/house/8008708>

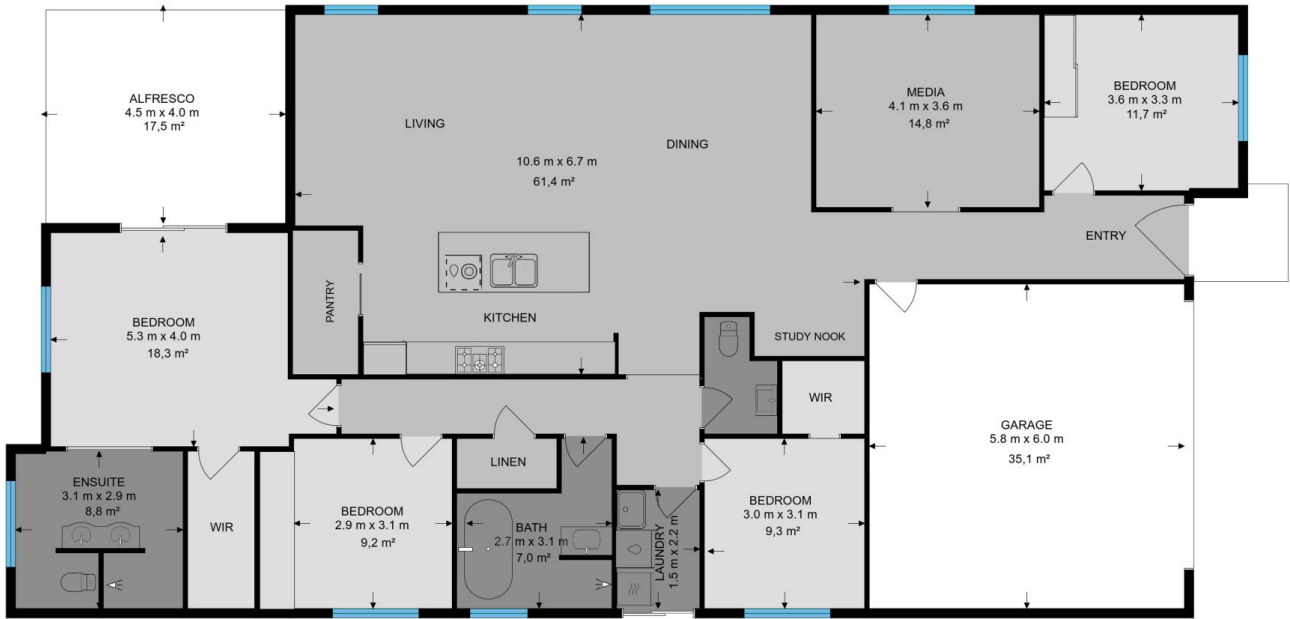


**Kim Hammond**  
0498 990 064



**Liam Higgins**  
0423 832 732

Measurements are approximate  
and are to be used only as a guide



Site Plan  
Back



Front

GARDEN  
SHED

**DOWLING**  
PROPERTY

9 Sailors Way, Raymond Terrace