



2A Talavera Close RAYMOND TERRACE NSW

3 1 1

Ideal property for the 1st home buyer or investor (expected rental \$430 - \$440 per week). Set in a quiet cul-de-sac in Roslyn Park with a rural feel about it, the home features:

- * 3 bedrooms, all with built-in robes, mirrored to main
- * Tiled entry pad
- * Formal lounge to front of house
- * Family/meals area off the kitchen
- * 3 way main bathroom
- * 2nd toilet
- * Floating timber floors throughout
- * Single garage
- * Covered rear deck

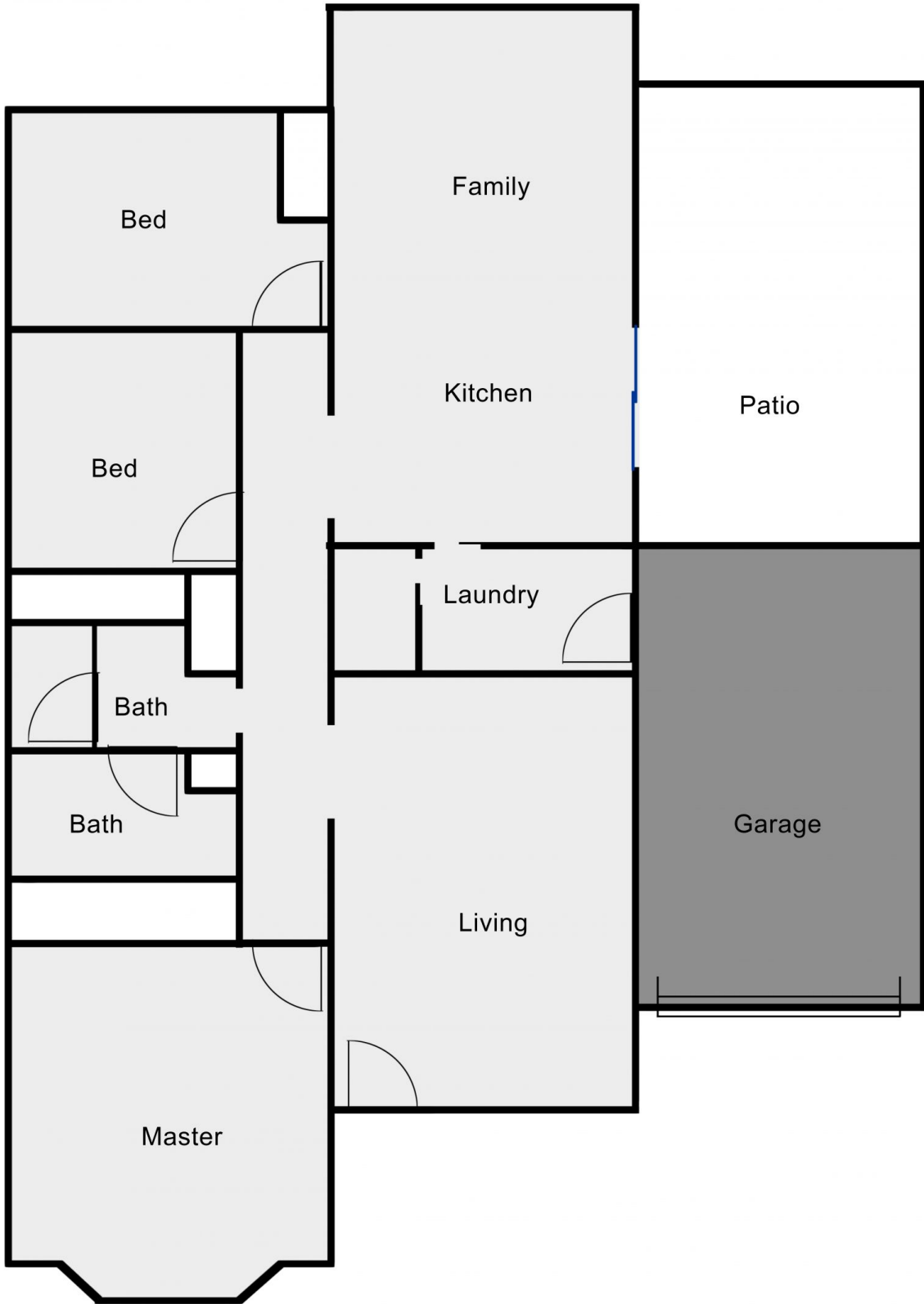
EXTRAS INCLUDE: 2 X RC/AC, CEILING FANS, LARGE YARD, GARDEN SHED

Price : \$ 440,000

View : <https://www.dowlingterrace.com.au/sale/nsw/port-stephens/raymond-terrace/residential/house/8017436>



Craig Higgins
02 4987 2226



Disclaimer

This floor and site plan including fixtures, furniture, measurements and dimension are approximate and for illustrative purposes only. This floor plan gives not guarantee, warranty or representation of accuracy and layout. All enquiries must be directed to the agent or party representing this floor plan