



### 154 Mount Hall Road Raymond Terrace NSW

3 2 2

Nestled away from the street, 154 Mount Hall Road offers a perfect blend of privacy and space. This beautifully maintained home features a spacious floorplan, making it ideal for families and entertainers alike. The entire house has been freshly painted, providing a modern and welcoming atmosphere. Enjoy the airy feel of raked ceilings in the living spaces and the versatility of double roller blinds, allowing you to switch between complete privacy and diffused natural light effortlessly.

Features include:

? Spacious lounge & dining room, generously sized for comfortable living and hosting guests.

? Large galley style kitchen with plenty of storage space to meet all your culinary needs.

? Stay cozy in winter and cool in summer with reverse cycle air conditioning and a charming slow combustion fireplace in the living room.

**Price** : \$ 715,000

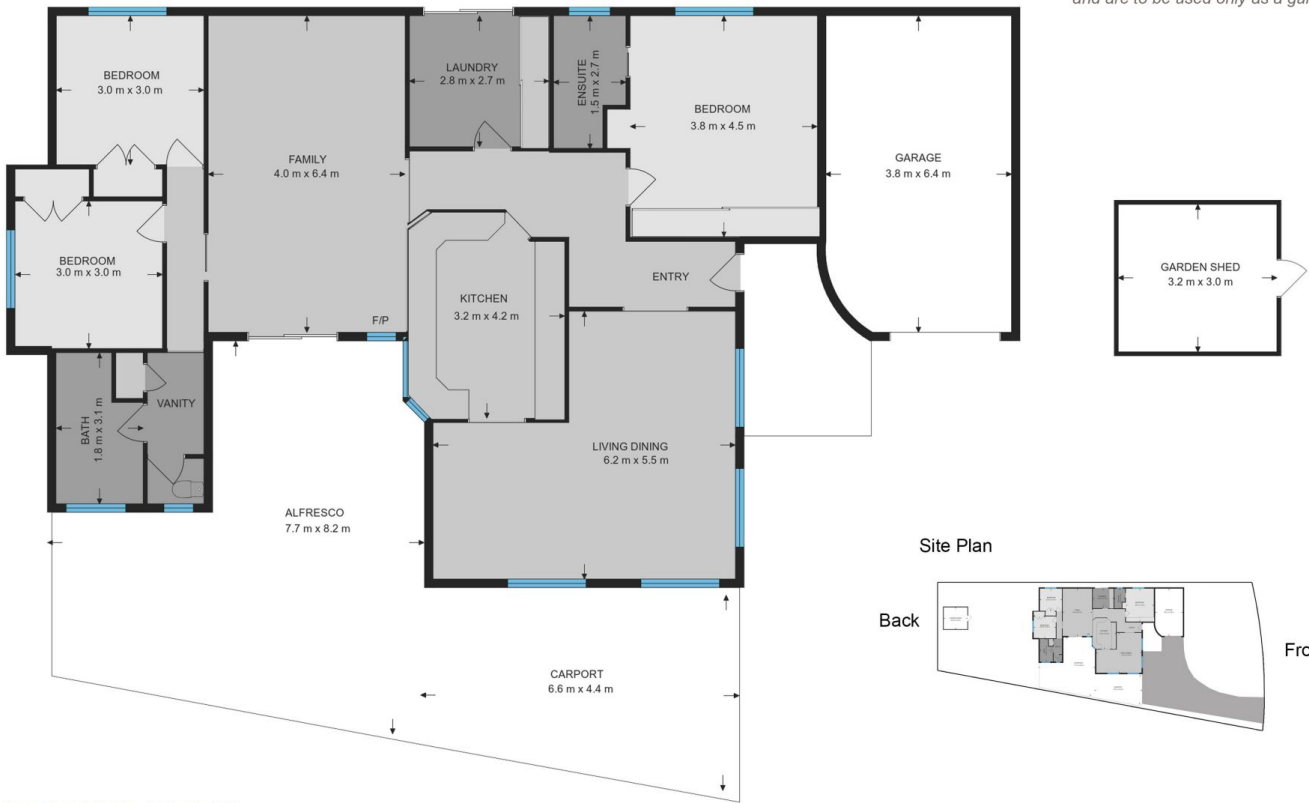
**Land Size** : 687 sqm

**View** : <https://www.dowlingterrace.com.au/sale/nsw/port-stephens/raymond-terrace/residential/house/8045034>



**Kim Hammond**  
0498 990 064

Measurements are approximate and are to be used only as a guide



**DOWLING**  
PROPERTY

154 Mount Hall Road, Raymond Terrace