



45 Beaton Avenue Raymond Terrace NSW

5 3 3

Discover the epitome of tranquil living in this exquisite two-story home, perfectly nestled on a generous 756 sqm block with uninterrupted rural views.

Ground Floor:

- ? Step into a stylish tiled entryway that sets the tone for the entire home.
- ? A spacious formal lounge perfect for entertaining guests or relaxing with family.
- ? 5th Bedroom: Convenient ground-floor bedroom ideal for guests or as a home office.
- ? Living room, cozy and inviting, this room is perfect for everyday living.
- ? Modern kitchen equipped with a dishwasher, ample storage and counter space, this kitchen will inspire your inner chef.
- ? Enjoy meals in the sun-drenched atrium dining area.

Price : \$930,000 - \$970,000
Land Size : 756 sqm
View : <https://www.dowlingterrace.com.au/sale/nsw/port-stephens/raymond-terrace/residential/house/8049349>

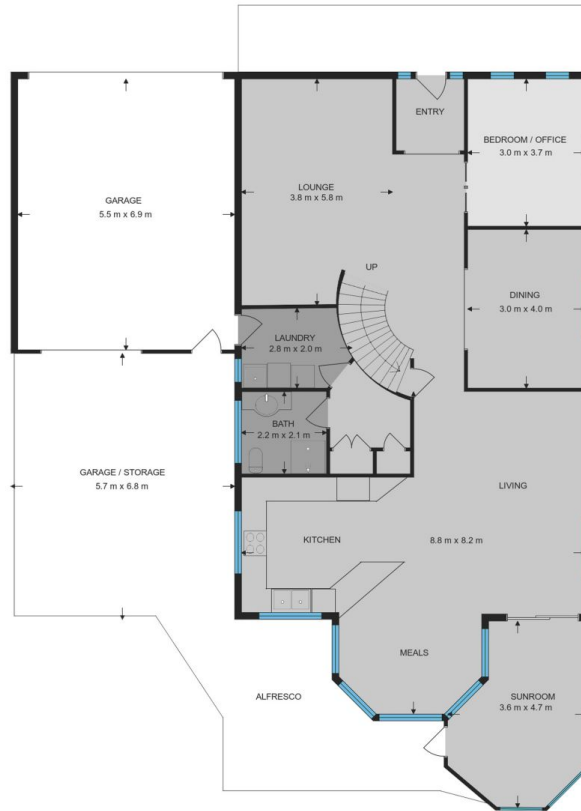
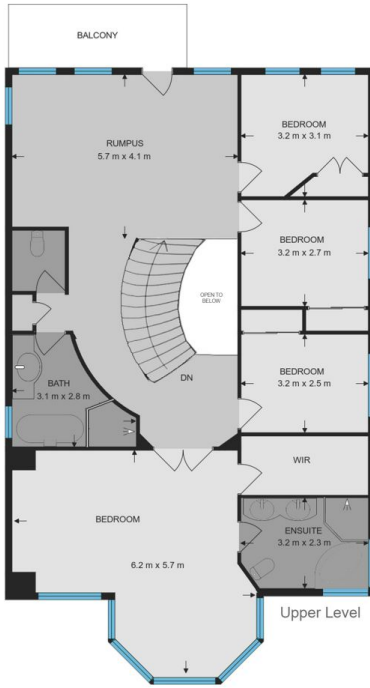


Kim Hammond
0498 990 064



Liam Higgins
0423 832 732

Measurements are approximate and are to be used only as a guide



DOWLING
PROPERTY

45 Beaton Avenue, Raymond Terrace