



7 Sherwood Place Raymond Terrace NSW

5 3 2

Welcome to 7 Sherwood Place, Raymond Terrace - a beautiful two-storey brick and tile home with stunning inground pool located just 3.5 km from Raymond Terrace CBD. This expansive property, situated on an 862 sqm block has a lovely outlook and an abundance of living space.

Price : \$ 850,000
Land Size : 862 sqm
View : <https://www.dowlingterrace.com.au/sale/nsw/port-stephens/raymond-terrace/residential/house/8081265>

Ground Floor:

- ? Welcoming tiled entry
- ? Office/5th bedroom
- ? Formal lounge and dining room
- ? Spacious colonial timber kitchen adjoining the living room
- ? Massive timber deck under timber pergola with alsynite sheeting, the perfect place to entertain
- ? Games room with split system air-conditioning
- ? Laundry and 3rd bathroom
- ? Internal access to double garage with auto doors

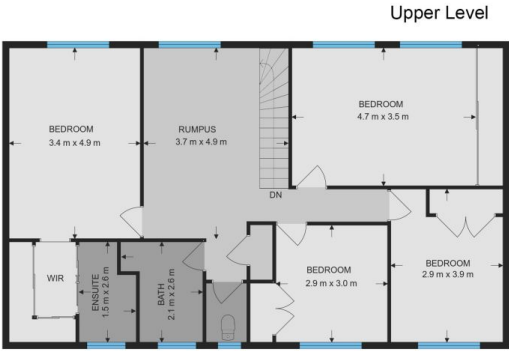


Kim Hammond
0498 990 064



Liam Higgins
0423 832 732

Measurements are approximate
and are to be used only as a guide



DOWLING
PROPERTY

7 Sherwood Place, Raymond Terrace