



14 Wahroonga Street Raymond Terrace NSW

3 1 1

Welcome to 14 Wahroonga St, a charming and unconventional home offering a blend of traditional features and unique potential. Located just a 1.2 km walk from the CBD, this property stands out with its distinctive layout and vibrant personality.

Price : \$ 490,000
Land Size : 544 sqm
View : <https://www.dowlingterrace.com.au/sale/now/port-stephens/raymond-terrace/residential/house/8085634>

Key Features:

The living & dining area features a built-in wall unit that currently blocks the original fireplace. Bold paint colours and paneling throughout the house add a splash of character.

Stay comfortable year-round with ducted air conditioning and ceiling fans throughout.

3 bedrooms, each with built-in robes. Note: Access to bedroom 3 is via bedrooms 1 & 2, creating a unique internal flow.

The compact kitchen has ample storage solutions. For

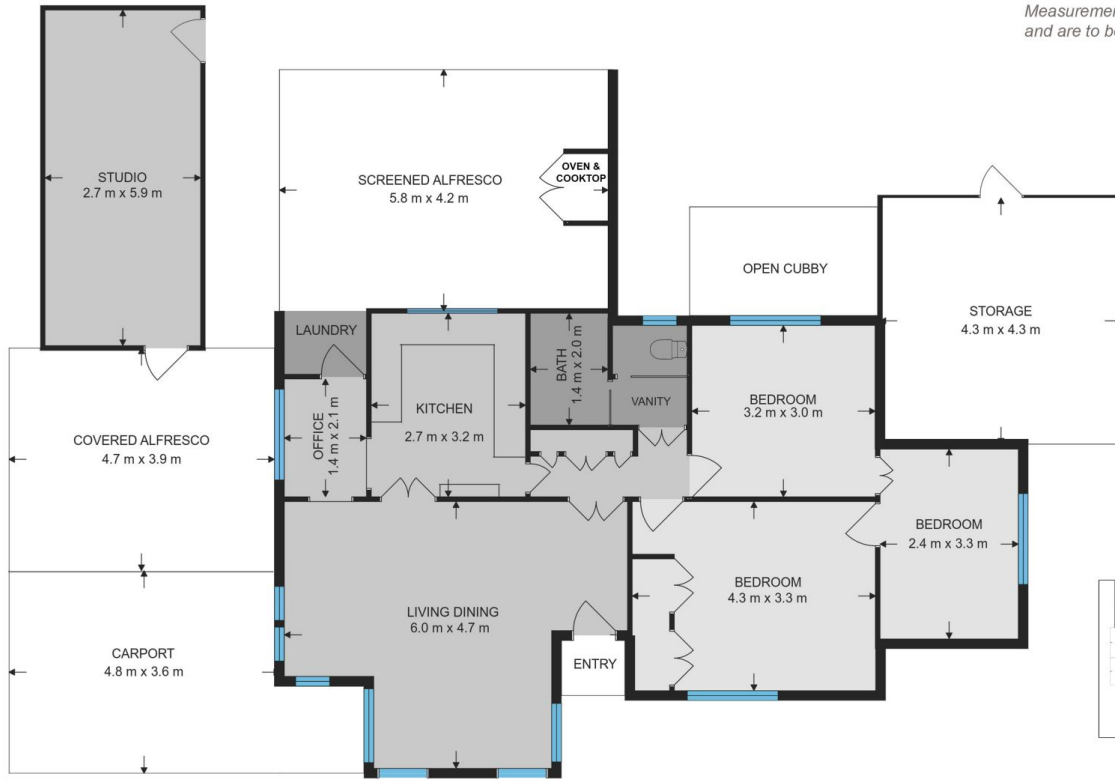


Kim Hammond
0498 990 064



Liam Higgins
0423 832 732

Measurements are approximate
and are to be used only as a guide



Site Plan
Back



Front

DOWLING
PROPERTY

14 Wahroonga Street, Raymond Terrace