



92 Alton Road Raymond Terrace NSW

3 2 2

An immaculately presented home that epitomizes elegance & quality. This inviting property beautifully marries timeless charm with modern conveniences, making it a rare gem for buyers who value both comfort & style. One of the standout features of this home is its thoughtfully updated kitchen & ensuite - both featuring a sleek, modern design that pays homage to the property's original character.

From the kitchen, dining & living areas, enjoy breathtaking views of the Williams River & the expansive Nelsons Plains farmland. These serene vistas add an element of tranquility to daily life, making the home a peaceful retreat from the hustle and bustle.

Key Features:

? Experience culinary excellence in your fully custom kitchen featuring dual ovens, a 900mm LPG gas cooktop, large pantry & inline cold-water filtration.

? Enjoy the open-plan dining and sunken living room,

Land Size : 562 sqm

View : <https://www.dowlingterrace.com.au/sale/ns-w/port-stephens/raymond-terrace/residential/house/8088861>

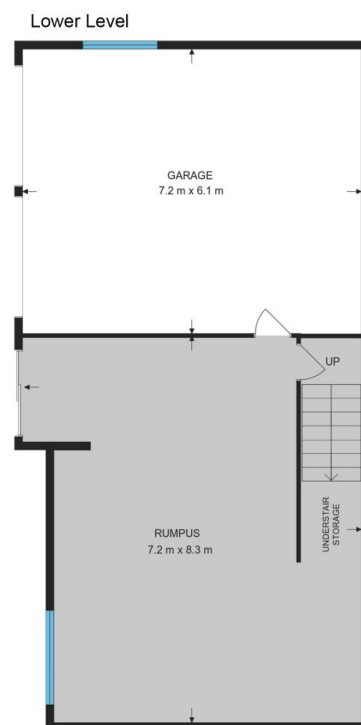
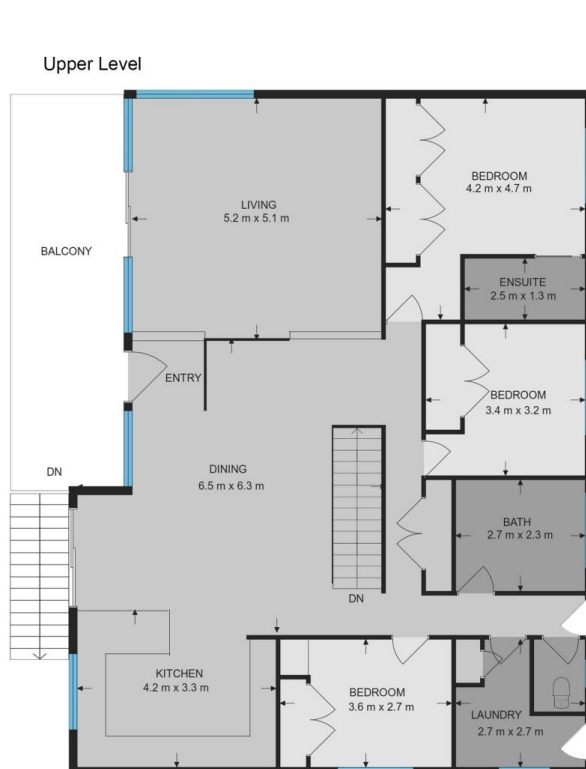


Kim Hammond
0498 990 064



Liam Higgins
0423 832 732

Measurements are approximate
and are to be used only as a guide



DOWLING
PROPERTY

92 Alton Road, Raymond Terrace