



6/22 Thomas Street Raymond Terrace NSW

2 1 1

Welcome to 6/22 Thomas St, a very well presented freestanding duplex nestled in the highly sought-after Thomas Mews complex. Located just a 1.1 km walk from the Raymond Terrace shopping precinct, this property offers convenience and comfort in a prime location. Enjoy proximity to local parks, Muree Golf Club, schools and a bus stop, making this the ideal home for effortless living.

Key Features:

- ? Situated at the top end of the complex, this unit is one of only two freestanding units with a view.
- ? An inviting front porch sets the tone for this charming home.
- ? Two generously sized bedrooms, both with built-in robes and ceiling fans for year-round comfort.
- ? Colonial timber kitchen equipped with a breakfast bar and dishwasher.
- ? An all-in-one bathroom that is immaculately clean and

Price : \$ 466,000

View : <https://www.dowlingterrace.com.au/sale/nsw/port-stephens/raymond-terrace/residential/unit/8090824>

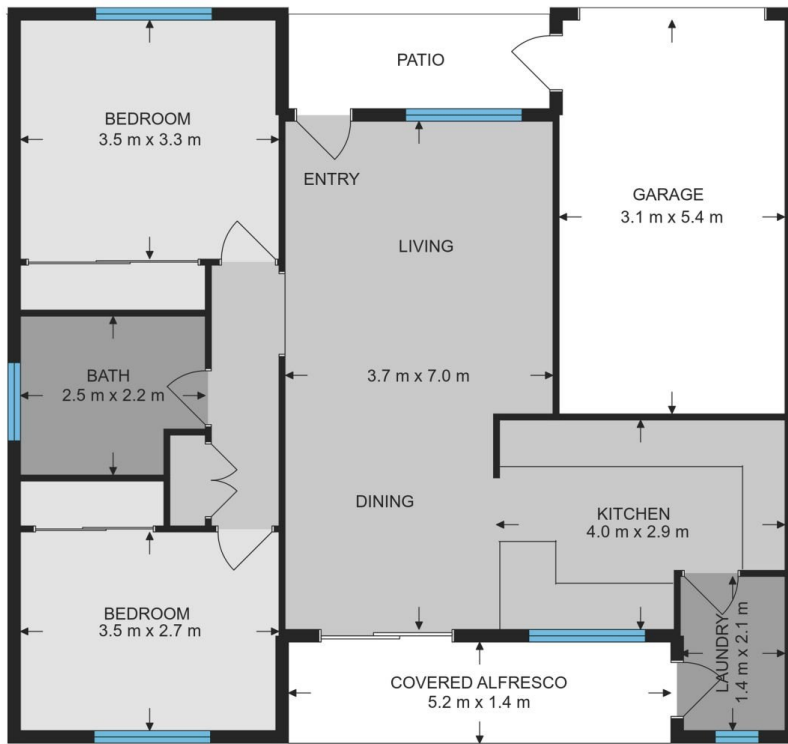


Kim Hammond
0498 990 064



Liam Higgins
0423 832 732

Measurements are approximate
and are to be used only as a guide



Site Plan

Front

