



## 146 Mount Hall Road Raymond Terrace NSW

3 1 3

This beautifully renovated three bedroom brick home, set on a generous 712sqm corner block, is a rare find in the sought-after Raymond Terrace area. With potential for dual occupancy (subject to council approval) this property is perfect for first home buyers, families, investors, or those looking to expand. Located approximately 3 km from the CBD and within walking distance to local shops and the Lakeside Tavern, this home offers the perfect blend of comfort, convenience, and style.

### Key Features:

- Modern Kitchen: Newly renovated, featuring a 5-burner gas cooktop, integrated dishwasher, soft-close doors and drawers, a self-cleaning pyrolytic oven, and elegant stone benchtops.
- Updated Bathroom & Laundry: Newly renovated with

**Price** : \$690,000-\$720,000  
**Land Size** : 712 sqm  
**View** : <https://www.dowlingterrace.com.au/sale/nsw/port-stephens/raymond-terrace/residential/house/8103524>

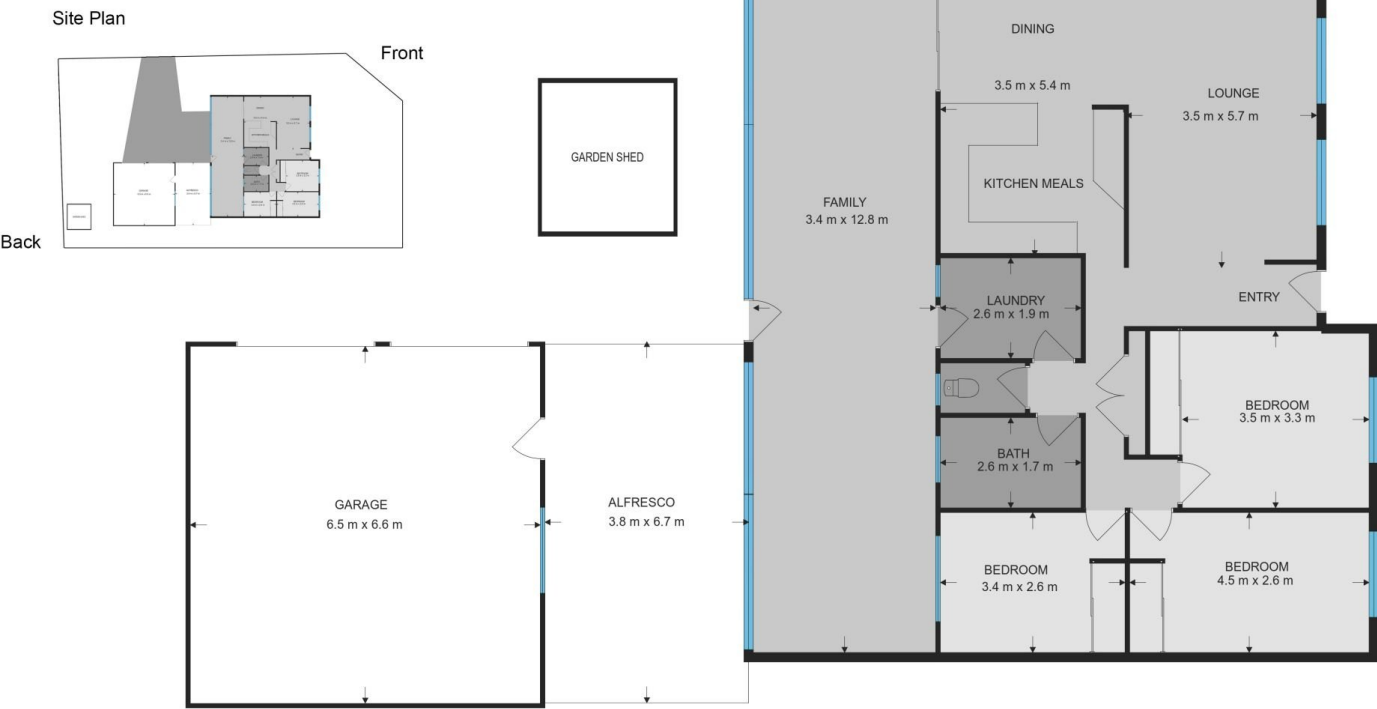


**Liam Higgins**  
0423 832 732



**Kim Hammond**  
0498 990 064

Measurements are approximate  
and are to be used only as a guide



**DOWLING**  
PROPERTY

146 Mount Hall Road, Raymond Terrace