



9 Bellevue Street Raymond Terrace NSW

4  1  2 

An exceptional family home nestled high on the hill with stunning views to Maitland. This refreshed gem offers a fantastic blend of modern updates and classic charm, perfect for families and those who appreciate a serene setting with convenient amenities.

Key Features:

? Modern Upgrades: The house has been thoughtfully refreshed with new floor tiles, contemporary paint, and a modern kitchen featuring a new bench, dishwasher, and appliances. The bathroom hardware is updated and the home boasts new carpets and a new 10kw ducted air system with wifi controller.

? Recent Enhancements: Enjoy peace of mind with a new Colourbond roof, updated guttering and fascia and recently replaced fences. The home also features new downlights and additional drainage for added convenience.

? Functional Layout: The home includes three bedrooms

Price : \$680,000 - \$710,000
Land Size : 776 sqm
View : <https://www.dowlingterrace.com.au/sale/nsw/port-stephens/raymond-terrace/residential/house/8107568>

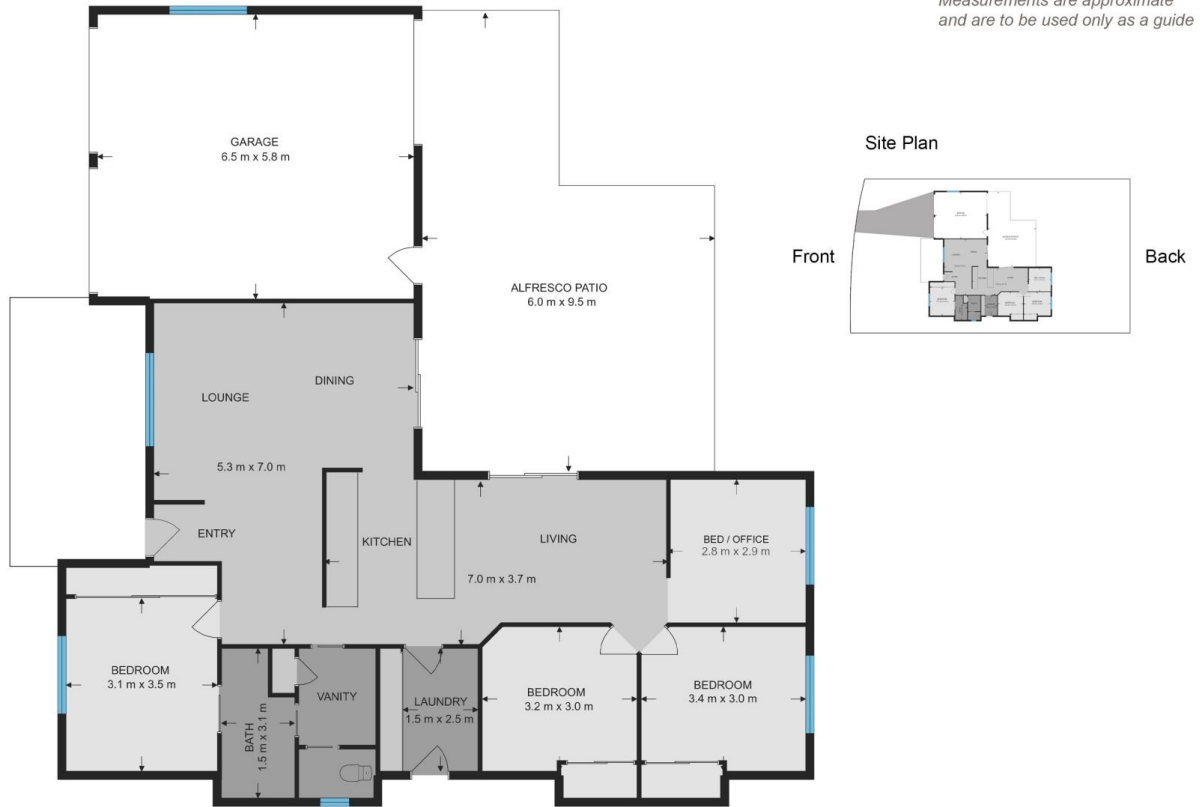


Kim Hammond
0498 990 064



Liam Higgins
0423 832 732

Measurements are approximate and are to be used only as a guide



DOWLING
PROPERTY

9 Bellevue Street, Raymond Terrace