

DOWLING

PROPERTY



Raymond Terrace

6 2 2

A beautifully maintained brick and tile family home in the highly sought-after Riverview Ridge. Surrounded by quality homes and just 3.4 km from Raymond Terrace CBD, this property offers the perfect blend of comfort, convenience, and style.

Key Features:

? 5 Bedrooms: 4 of which come with built-in robes (BIRs) and ceiling fans. The main bedroom boasts a private ensuite.

? Office: Includes a large timber built-in desk, perfect for remote work or study. Can be converted to a 6th bedroom.

? Dining & Kitchen: A very large dining room sits alongside a modern, crisp white kitchen, centrally located within the home. The kitchen features a two-drawer dishwasher, induction cooktop and a corner pantry.

? Living Areas: Spacious living room and an expansive fully enclosed sunroom with wall-to-wall windows overlooking

Price : \$860,000

Land Size : 674 sqm

View : <https://www.dowlingterrace.com.au/sale/ns-w/port-stephens/raymond-terrace/residential/house/8110450>

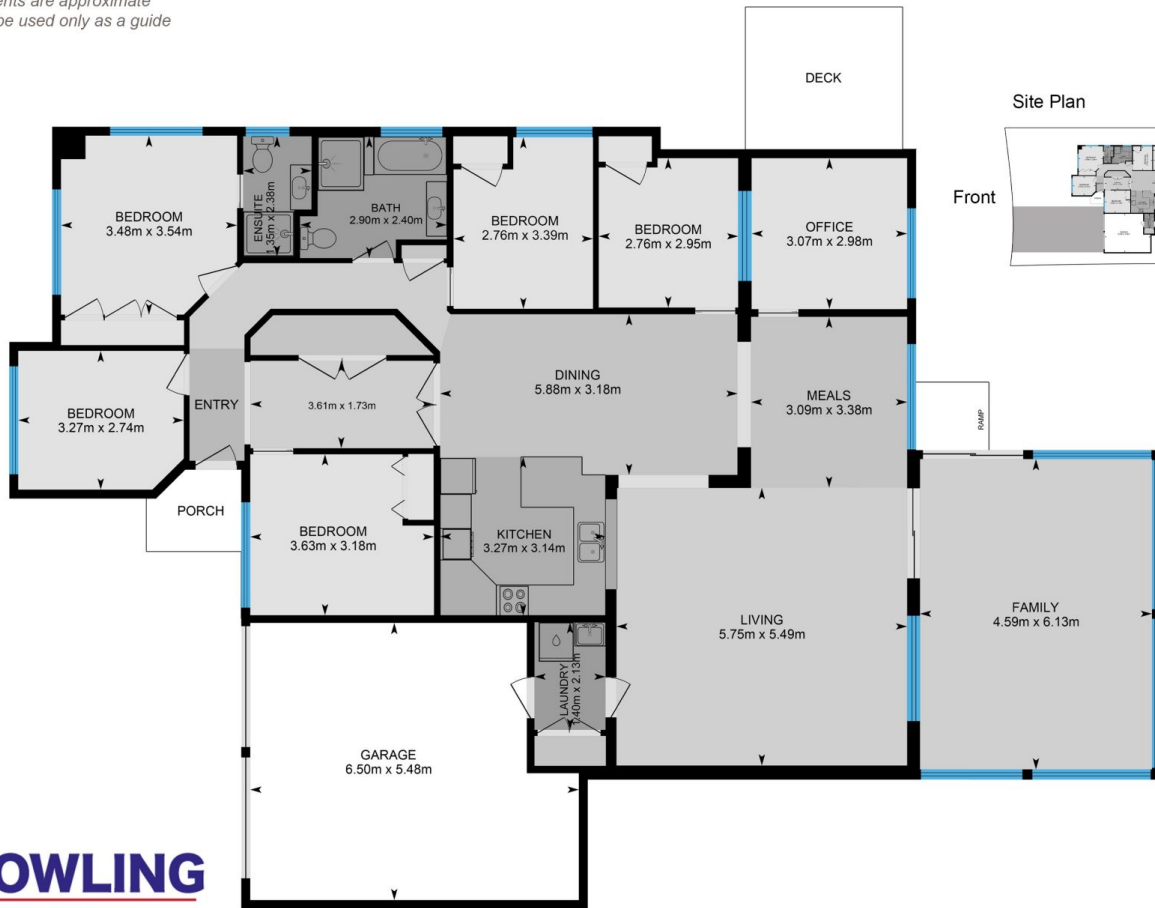


Kim Hammond
0498 990 064



Liam Higgins
0423 832 732

Measurements are approximate
and are to be used only as a guide



DOWLING
PROPERTY