



12 Cederwood Crescent RAYMOND TERRACE NSW

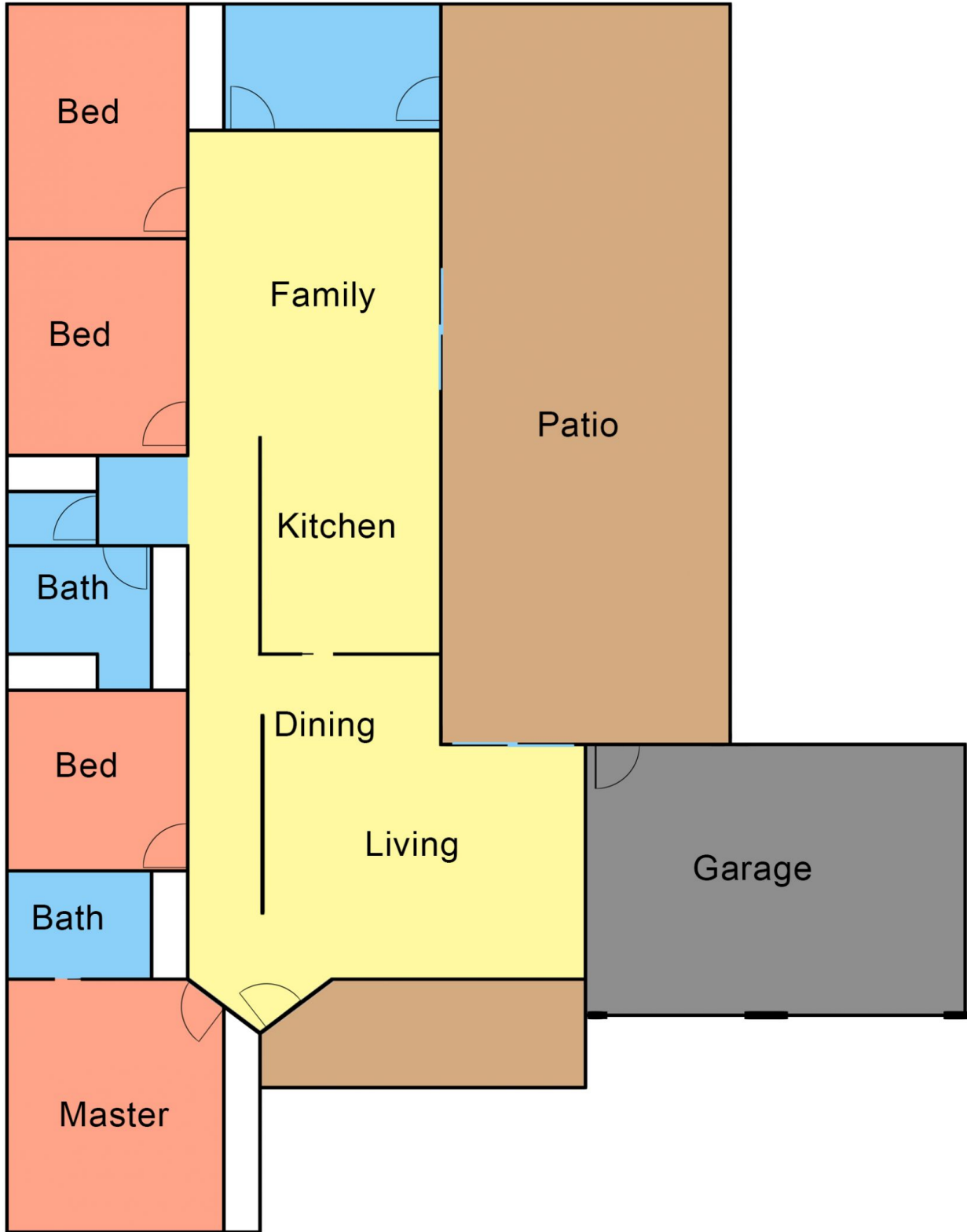
4 2 2

Ideally located in the "GROVE ESTATE" and amongst quality homes. This property is within walking distance to schools, shops, Tavern and childcare facilities.

Land Size : 677 sqm
View : <https://www.dowlingterrace.com.au/sale/ns-w/port-stephens/raymond-terrace/residential/house/8110475>

Features:

- * 4 bedrooms all with mirrored robes and ceiling fans
- * Ensuite and RC/AC to main
- * Combined formal lounge and dining
- * As new kitchen (under 12 months old)
- * Family room off the kitchen that opens out to a large (Approx 11m x 3.8m) aluminium pergola area - great for entertaining complete with outdoor combustion fire
- * 3 way main bathroom
- * Floating timber floors
- * Month old carpet to bedrooms
- * Double drive through garage



Disclaimer

This floor and site plan including fixtures, furniture, measurements and dimension are approximate and for illustrative purposes only. This floor plan gives not guarantee, warranty or representation of accuracy and layout. All enquiries must be directed to the agent or party representing this floor plan