



56 Links Drive Raymond Terrace NSW

3 1 1

Discover this 3-bedroom brick home. With long term tenants in place keen to renew their lease at market rate of \$540 per week, providing immediate rental income.

Key Features:

Welcoming front porch.

New Colourbond roof: Enjoy peace of mind with this stylish and durable upgrade.

Renovated timber galley kitchen with laminate benchtops. Cozy dining room; a small but inviting space, complete with reverse cycle air conditioning for year-round comfort.

Entry, hallway, kitchen and dining areas boast easy-to-maintain tiled flooring, while the lounge and bedrooms feature beautiful timber floorboards.

Three spacious bedrooms with ceiling fans & built-in robes. Crisp white bathroom with bath & separate shower. Separate toilet.

Price : \$575,000
Land Size : 511 sqm
View : <https://www.dowlingterrace.com.au/sale/ns-w/port-stephens/raymond-terrace/residential/house/8138012>

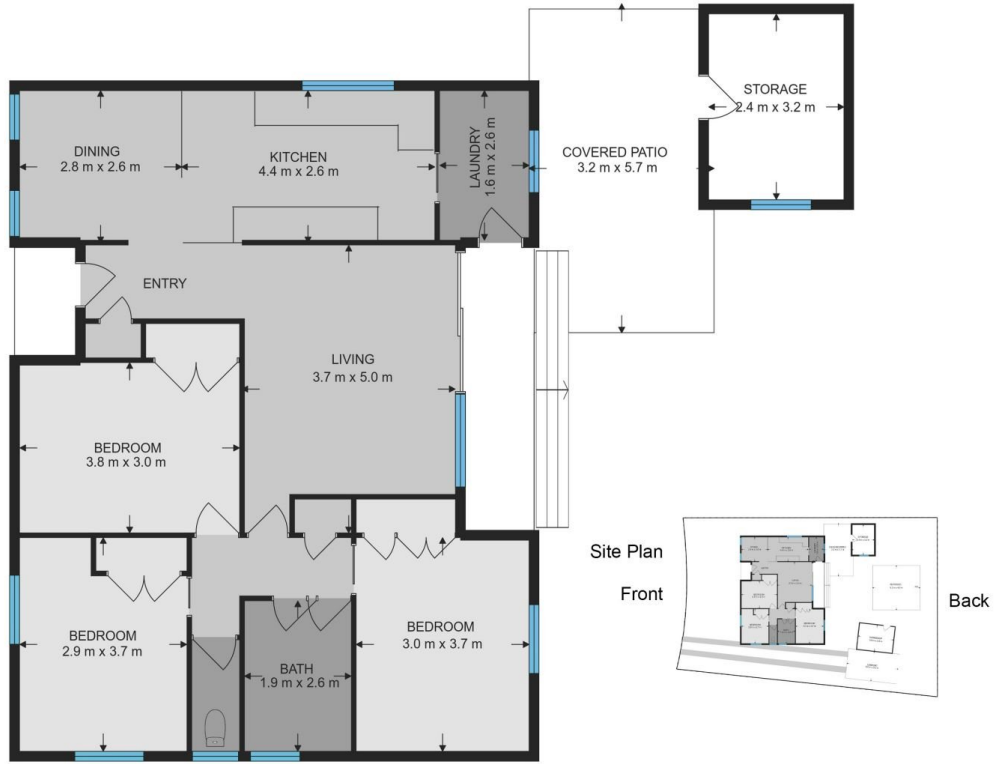
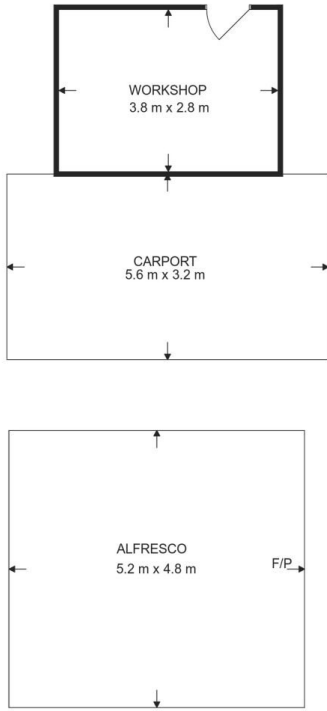


Kim Hammond
0498 990 064



Liam Higgins
0423 832 732

Measurements are approximate
and are to be used only as a guide



DOWLING
PROPERTY

56 Links Drive, Raymond Terrace